



1. A collection of metalware to include a brass kettle, silver plated items, badges, coins, costume jewellery, pocket watch, a tray and other items.



2. Collection of vintage toys to include Spot-On models by Triang in original box, a Nintendo Game Boy, a Roadstar 5" portable television, Dinky, Corgi and other items.

Untested for electrical safety. Sold as seen.



3. A collection of various toys, Meccano, Action men and accessories, Invicta Master Mind games, etc.



4. A collection of aviation pictures, a boxed plate and an oil on canvas of a pheasant.



5. A collection of mixed pewter, silver plated items, flatware, a bottle of Bells whisky and some glassware.



6. Mixed metalware, silver plated items, a lighter and other items.



7. A mixed collection of cameras to include Zenit along with a pair of binoculars.



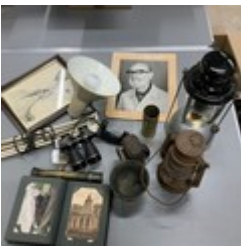
8. A Victorian button back elbow chair.



9. Oak jointed stye stool and two small occasional tables.



10. An assortment of Victorian and later copper and brass items to include pans, kettle, and a coal bucket.



11. A mixed collection to include an army oil lamp, Lucas bicycle lamp, Anglepoise lamp, Ottoman style trench art, binoculars and other items.

Untested for electrical safety. Sold as seen.



12. A collection of mixed oriental dolls, and various other oriental items along with brassware.



13. A Sesame Street toy house, two records, two dolls, and Brooke Bond tea card books x 4.



14. A collection of collectors plates including Brambly Hedge.



15. A collection of world and U.K stamps contained in two red albums, along with various loose examples.



16. A collection of miscellaneous items, including silver-plated ware, a dressing table set, Golly figures, a solar system poster and other items.



17. A wooden box containing sewing items.



18. Five bottles of alcohol to include Dow's Port, Courvoisier Cognac and three others.



19. A vintage Haker record player.

Untested for electrical safety. Sold as seen.



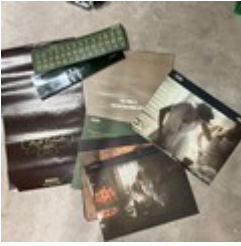
20. A box of mixed crystal glassware and various ceramics, trinket boxes, 1930s cake plates, glass paperweights, and other items.



21. A group of collectors display frames and boxes, and jewellery box etc.



**22.** A brass samovar with a brass bed pan.



**23.** Three assorted Pirelli calendars.



**24.** A modern chess table with metal playing pieces.



**25.** QED Integrated turntable.

Untested for electrical safety. Sold as seen.



**26.** A set of four Japanese framed prints.



**27.** GM Cricket bag and various vintage bats.



**28.** An assortment of silver-plated ware.



**29.** A mixed box of ceramic cats, Royal Worcester and various others.



**30.** A collection of ten mixed pictures, including prints and oil paintings, is contained in decorative gilt frames.



**31.** A silver plated tyg, oil lamp and other items.



**32.** A collection of Bristol Blue Glass.



**33.** A collection of topless calendars from the sun, the star, approximately 30 in total.

(2 bottles not included)



**34.** A decorative mirror in the form of a boat, along with two other mirrors.



**35.** A collection of Bigglestone framed photos, to include a large photo of swan "Swan on the Dom", a framed "Oranges & Lemons" and other items. Also includes a collection of 19th century albumen prints.



**36.** A collection of framed pictures to include oil and watercolours.



**37.** A collection of pictures, including portraits, a harlequin and various others.



**38.** Vittorio Marusso (Italian, b1867)  
Three females  
Watercolour  
Signed lower right V.rio Marrusso, Venezia  
38cm x 30cm



**39.** A 'Titanic' (White Star Line) and 'The Caledonian Blue' (London and North Eastern Railway).  
Signed 'Sara Newman' and dated '2012' in metallic silver ink (verso)  
24.5cm x 29cm (image)  
29.5cm x 34cm (box frame)



**40.** A Worthy bike frame.



**41.** Sky-Watcher telescope along with accessories.



**42.** A beech wood child's chair and four others.



**43.** Collection of vintage bottles.



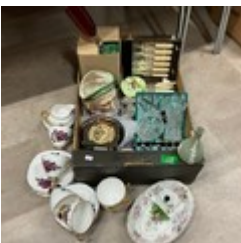
**44.** An assortment of ceramic figurines including an assortment of Hummel figures.



**45.** Collection of silver plated items and pewter.



**46.** Collection of toys to include a My Size Bride Barbie in original box, a Happy Holidays boxed Barbie, Barbie typewriter and a Sonic The Hedgehog pinball game.



**47.** Two boxes of mixed ceramics, glassware, flatware, Toby Jug, Wedgwood etc.



**48.** Collection of ceramics and glassware to include a Shelley Kingfisher pattern vase, a Sylvac dog, Royal Doulton, Wedgwood and various other items.



**49.** Mixed lot to include teddy bear and dog, carved wooden items, a model of a boat, and a modellers building system kit.



**50.** Two boxes of mixed ceramics and glassware.



**51.** Super Nintendo, a boxed Super Wild Card DX2 and games.

Untested for electrical safety. Sold as seen.



**52.** A vintage stronghold Stocks & Dies set along with a metal umbrella stand and a large metal pan.



**53.** Collection of kitchenalia and metalware to include a ceramic jelly mould, glass rolling pin, copper bucket etc.



**54.** A collection of wooden items to include boxes, letter holders and other items.



**55.** Two writing slopes, two other boxes and a pair of figures and a vase.



**56.** Mixed lot to include money tins, a Thorens musical box in original box, small silver frame, brass letter opener, pen knives, and other items.



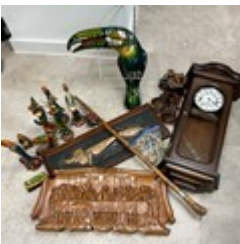
- 57.** A mixed lot to include a set of Le Creuset pans, set of Nigella Lawson mixing bowls, a Bohemian glass vase, wooden elephants, various plates and other items.



- 58.** Collection of brass ware including stamps.



- 59.** A button-back upholstered Chesterfield sofa. Approximately L200cm x W95cm.



- 60.** Mixed lot to include wall clock, walking stick, wood carving, plaque of a dog, and other items.



- 61.** A set of butler knives with silver handles and other items.



- 62.** Collection of Masonic items in three leather cases.



- 63.** A collection of silver plated items, medical items and ceramics.



**64.** Collection of ceramics and glassware to include a Lladro figure, crested ware, coloured glass vases, decanter, and other items.



**65.** Collection of silver plated items, along with some wooden drawers and another box.



**66.** Two boxes of assorted ceramics and glassware to include Wedgwood and other items.



**67.** A box of assorted ceramics including vintage jugs.



**68.** A collection of various ceramics to include Melrose vase, plates, Poole, Wade, 19th-century Japanese ware and other items.



**69.** A box of assorted drinking glasses, including crystal.



**70.** An assortment of ceramics and glassware including Wedgwood, Cranberry, a Bohemien ruby glass goblet with hunting scenes and oriental items.



- 71.** A collection of Doctor Who collectors' figures in original boxes with magazines and other display items.



- 72.** Collection of ceramic Shire horses, along with a cat, and three mantle clocks.



- 73.** Two boxes of assorted ceramics, including continental figures and collectors' spoons.



- 74.** Collectables to include a Players Navy Cut tin, a Lehmann tin turtle, an AA badge, and other items.



- 75.** Mixed lot to include vintage purses, lamps, metal money tin, a whip, a straw boater hat, Royal Worcester, a silver weighted handle shoe horn and other items.

Untested for electrical safety. Sold as seen.



- 76.** Assortment of framed prints, watercolour and oils.



- 77.** Anthony Benjamin (British, 1931-2002) Geometric Abstraction (Squares 5 x 5), c1962  
Gouache  
Unsigned - Artist's Estate Sale  
16cm x 15cm (image)  
34cm x 33cm (framed)



- 78.** Anthony Benjamin (British, 1931-2002) Geometric Abstraction (Blue / Red Ground, 9 Black Circles), c1962  
Gouache  
Unsigned - Artist's Estate Sale  
15cm x 17cm (image)  
35cm x 35.5cm (framed)



- 79.** Anthony Benjamin (British, 1931-2002) Geometric Abstraction (Blue Ground, Yellow Squares, Red Circles), c1962  
Gouache  
Unsigned - Artist's Estate Sale  
25.5cm x 23cm (image)  
42cm x 41.5cm (framed)



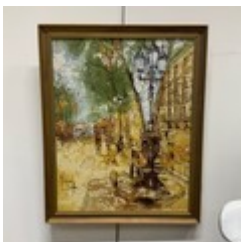
- 80.** Anthony Benjamin (British, 1931-2002) Geometric Abstraction (Green Ground, Diamonds 24 x 20), c1962  
Gouache  
Unsigned - Artist's Estate Sale  
16cm x 26cm (image)  
34cm x 44cm (framed)



- 81.** Goldsmith Early 20th-century  
Coastal seascape, figures on the beach  
Signed and dated lower left, 'Goldsmith 1912'  
Watercolour  
F&G  
36cm x 30cm



- 82.** Alberto Gutiérrez (Mexican, Contemporary) Apunte Excavaciones / Yagul, Oaxaca, 1989  
Watercolour on paper  
Signed 'Alberto Gutierrez' (lower right)  
20cm x 27cm  
47.5cm x 52.5cm (Gilt framed and glazed)



- 83.** Bernard Dufour, oil on canvas street scene, signed lower left.



- 84.** A mixed collectors' lot, to include a pair of vintage Everlast leather boxing gloves, various brass items, a vintage Tri-ang baby walker and a Victorian-style farmhouse chair.



- 85.** A collection of seven prints and oil on canvas, contained in heavy decorative gilt frames.



- 86.** A 19th-century oak hall chair, along with a mid century/vintage unit.



- 87.** A vintage Fender guitar case, along with another guitar case and an Australian Ashton guitar.



- 88.** Playstation 2 and a large collection of Playstation games.  
Untested for electrical safety. Sold as seen.



- 89.** Five collectors cabinets to include a glass topped display example, and various multi drawer examples.



- 90.** Collection of ephemera items including stamps.



- 91.** Nintendo Gamecubes along with Mario Kart Wii in box.  
Untested for electrical safety. Sold as seen.



- 92.** Three wooden boxes along with two writing slopes and one other.



- 93.** Sinclair ZX Spectrum along with games, and one other Sharp personal computer.

Untested for electrical safety. Sold as seen.



- 94.** A silver-mounted wall plaque, along with a jewellery box, ceramic vases and other items.



- 95.** An assortment of silver plated items, flatware, chess set with carved animals and other items.



- 96.** Nintendo 64 and games.

Untested for electrical safety. Sold as seen.



- 97.** A Peli photography hard case with compartments.



- 98.** Columbia gramophone and a Garrard gramophone.

Untested for electrical safety. Sold as seen.



**99.** Sega Dreamcast, keyboard and games.

Untested for electrical safety. Sold as seen.



**100.** A gilt candleabra and a lamp in the form of a couple with shade.

Untested for electrical safety. Sold as seen.



**101.** Collection of ceramics to include a pair of vases, oriental vase and other items.



**102.** An Edwardian oak framed chaise longue.

Approximately L180cm



**103.** A collection of photography equipment including Olympus, Canon, Praktica cameras, Sony video recorders, various lenses, camera cases etc.



**104.** A collection of photography equipment including Minota camera, various lenses, a Chinon camera, video recorder and Reef Master camera, camera bags etc.

Untested for electrical safety. Sold as seen.



**105.** A collection of photography equipment including vintaged boxed cameras, various lenses, Cine Editor, various cases etc.

Untested for electrical safety. Sold as seen.



- 106.** Collection of photography equipment to include vintage Kodak, Zenick, Hoya filters, Dual Editor, Sigma lens etc.



- 107.** A collection of photography equipment including various lenses, flash guns, various camera cases, Lumicon video recorder etc.

Untested for electrical safety. Sold as seen.



- 108.** Collection of photography related items including Polaroid cameras, vintage cameras, Chinon, Praktica etc.



- 109.** A collection of photography equipment including vintage Kodak cameras, Praktica camera, various filters and lenses, plate camera, flash guns, etc.



- 110.** Sega Saturn along with games.

Untested for electrical safety. Sold as seen.



- 111.** Compact Interactive Player along with to include various hand controllers, PC Engine, Diskdual, Pokeman games and other items.

Untested for electrical safety. Sold as seen.



- 112.** A collection of photography equipment including Minolta vintage camera, various lenses, Praktica and Kodak cameras etc.



**113.** Xbox 360 along with games along with another Xbox, controllers and Xbox games.

Untested for electrical safety. Sold as seen.



**114.** Xbox One along with games, some sealed.

Untested for electrical safety. Sold as seen.



**115.** A Guvnor GV503 guitar, along with a Spanish guitar



**116.** A painted pot cupboard "The East Sussex Golf Society est 1872 club gold 117 years experience"

Approximately H87cm x W37cm x D24cm.



**117.** Colleen Farr, RCA (British Designer, b.1930s) Two Original Red / Grey Textile Designs, c1950s (in one frame)

Ink on paper

83.5cm x 44cm (grey frame)



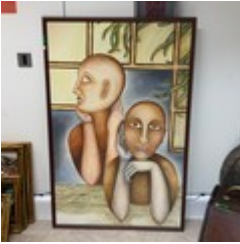
**118.** Three oil paintings by Caroline C Burnett, along with four other pictures.



**119.** A vintage pine bench.



**120.** A child's chair.



**121.** A large contemporary oil on board of two seated figures entitled "Exception".

Approximately H141cm x W93cm.



**122.** Colleen Farr, RCA (British Designer, b.1930s) Original Black and Grey Textile Design, c1950s  
Ink on paper  
38cm x 40cm (grey frame)



**123.** Colleen Farr, RCA (British Designer, b.1930s) Three Original Textile Designs, c1950s  
(in one frame)  
Ink on paper  
56.5cm x 25.5cm (grey frame)



**124.** Norma Jameson, RBA, ROI, (British, b.1933) Textile Design, c1958  
† Mixed media  
67cm x 31cm (textile)  
77cm x 40cm (framed)



**125.** A large Middle Eastern wall hanging, along with two coal scuttles.



**126.** Seven signed Gordon King framed pictures along with an oil on board continental scene.



- 127.** A metal wine rack, along with a wicker basket and bamboo unit



- 128.** A leather floor bean bag.  
Approximately 85cm diameter.



- 129.** Two Robert Morden maps, Berkshire and Kent.



- 130.** A 4-piece metal conservatory suite comprising upholstered stool, elbow chair, and chaise lounge with undertier and a glazed shelf at the foot end, together with a glazed lamp table with undertier. H91cm x W33.5cm. Chaise lounge W109cm (4) £80-£120



- 131.** A large collection of studio lighting equipment, including tripods, booms, spot lights, reflectors, umbrellas and various other items.

Untested for electrical safety. Sold as seen.



- 132.** David Lucas (British, 1802-1881)  
The Grand Canal, Venice, engraved from the original drawing by James Duffield Harding (British, 1797-1863), originally published November 1838  
Coloured engraving  
Framed and glazed  
70cm x 56.5cm



- 133.** An Edwardian ebonised spinning wheel.

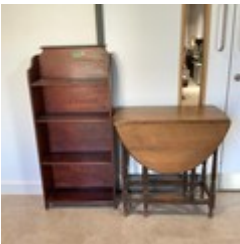


**134.** An extensive collection of dark room photographic equipment to include two enlargers, a box of film, filters, timers etc.

Untested for electrical safety. Sold as seen.



**135.** An assortment of artwork including David Shepherd.



**136.** An oak gateleg drop leaf table and a floor standing bookcase

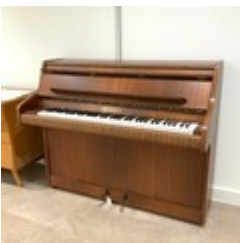


**137.** Three bedroom chairs, crib and plant stand.



**138.** A reproduction oak cabinet of two doors above a single drawer.

Approximately H88cm x W81.5cm x D47cm.



**139.** A Bentley piano.

Approximately L122cm x H100cm x D54cm.



**140.** Set of stained wall shelves and a Le Creuset wall unit along with Le Creuset pans.

Wall shelves L108.5cm x H87.5cm approx.



- 141.** Mid-century/vintage sideboard, teak sideboard, and Victorian pine chest of drawers.

Sideboard L152cm x H82cm x D47cm approx.  
Drawers L99.5cm x H81cm x D48cm approx.



- 142.** A stained wooden floor standing towel rail.



- 143.** A painted rocking chair.



- 144.** A foldover card table.



- 145.** Rosewood Barometer.



- 146.** Laurence Llewelyn-Bowen (British, Contemporary, b.1965)  
Exotic  
Mixed media hand-embellished print  
Signed in pencil to the margin and numbered 151 / 495  
Gilt-framed and glazed  
20cm x 20cm (image)  
66cm x 63cm (framed)



- 147.** Professor Nicholas Wade, F.R.S.E. (Scottish, Contemporary)  
Tokens of Sensation, 1994  
A portrait of Hermann von Helmholtz (1821-1894) after an engraving in Königsberg, 1902, centenary limited edition print  
Signed and numbered 1/10 (lower right)  
Aluminium-framed and glazed  
48cm x 36.5cm (image)

53cm x 43cm (framed)



148. Three framed Bigglestone photos to include "The Herd I", "The Herd II" and "The Sweeper".



149. "Little Oaks" decorative barge/narrow boat sign. Approximately L90cm x H56cm.



150. Two mirrors to include a whisky advertisement mirror and a Gordons Gin advertisement mirror.



151. Golly money box - cast iron.



152. A mythical possibly Naga Kanya statue of a winged goddess holding a polished sphere.



153. A pair of Agatha Walker The Beggar's Opera figures in patinated wax circa 1920s comprising: Mackheath and Polly Peachum with inscription to the base: 'Without disguise, heaving sighs, dotting is, my constant heart discover', dated 1921; Lucy Lockit inscribed 'Violet Marquesita' to the base dated 1921. H24cm.



154. A collection of metal animals along with fences and trees.



**155.** A police hat, two medals, police badge and a metal hat case.



**156.** An assortment of glass paperweights including one with bees and frogs.



**157.** Collection of Beatrix Potter Tale of Peter Rabbit and others.



**158.** Austin sculptures gold pig large plaster figure.



**159.** An Aneroid barometer.



**160.** Playworn Die Cast toys.



**161.** A boxed set of 6 Babycham glasses.



**162.** A collection of vintage die-cast farm toys.



**163.** Collection of vinyls to include Graceland Paul Simon, Queen, A Night at the Opera, Beatles etc.



**164.** FRANK PATON (1855-1909)  
Titled "They Won't Be Happy Till They Get Em", set within a border of comical scenes  
Signed lower right  
Framed print  
21cm x 15cm  
Together with two similar prints.



**165.** William Henry Stockman (British 1935-2021)  
Harbour scene  
Acrylic on canvas  
Signed lower left W H Stockman  
39.5 x 29cm



**166.** Collection of stamps.



**167.** Collection to include Led Zeppelin official programme, The Who concert ticket, a Status Quo programme, a poster, collection of postcards.



**168.** An assortment of Doulton Lambeth and Royal Doulton table ware including a pair of salad servers.



**169.** Brambly Hedge plates, 3 in boxes along with 1 empty box.



**170.** Cutlery set in case.



**171.** A collection of stamps including presentation packs.



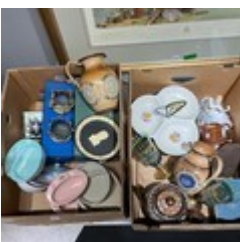
**172.** Two cameras, one Nikon F90 and one other vintage film camera.



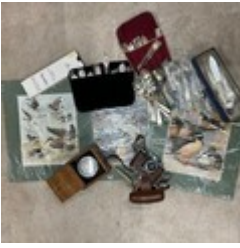
**173.** A vintage near-canteen of cutlery, including Mappin and Webb.



**174.** A GWR cast wagon plaque.



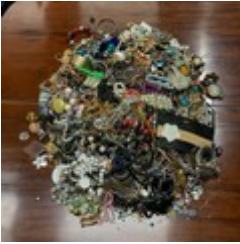
**175.** Collection of ceramics to include, Doulton Lambeth stoneware jug with four panels with quotations to each, Royal Doulton, Wedgwood, Poole pottery, and other items.



**176.** A mixed lot to include a Gimble, a Halina camera, flatware, three prints of wildlife and other items.



**177.** Collection of glassware, plates, a wall clock, two Corgi toys, a boxed 007 Aston Martin, a Wade character jug, Spode blue and white jug and other items.



**178.** A collection of costume jewellery.



**179.** A collection of costume jewellery.



**180.** A collection of costume jewellery.



**181.** A collection of costume jewellery.



**182.** Iraq Airways boarding pass wallet, Cornwall Rifles cap badge, and Royal Army Medical Corps Malaya campaign medal.



**183.** A collection of gents fashion watches, Lorus, Pulsar, Sekonda etc.



**184.** A collection of coins, stamps and banknotes.



**185.** A collection of silver plated cutlery and vintage Coleman tin along with a Masonic mug.



**186.** A vintage gold plated necklace, a Trifari necklace and Prussian cross of merit.



**187.** Small box of costume jewellery.



**188.** A collection of coins and notes including a £5 note.



**189.** A group of gents wristwatches, Rotary watch, Sekonda items and others.



**190.** A collection of mixed marbles.



**191.** A silver plated dog whistle.



**192.** A penny black stamp, along with Disney and Team GB gold-plated coins.



**193.** An assortment of costume jewellery, including freshwater pearls, bangles, bracelets, etc.



**194.** Two boxes of assorted ceramics and metalware to include a Grimwades The Mecca hot water bottle, giant ceramic egg, jugs, Bavaria fish dinnerware items etc.



**195.** Collection of fountain pens to include gold nibs.



**196.** A collection of miscellaneous coins.



**197.** An assortment of English commemorative coinage including commemorative.



**198.** A collection of mixed 19th and 20th century coinage, silver examples, tokens, cartwheel 2 pence, mixed stamps and other items.



**199.** A Regent motoring oil can, along with bronze model of a gnome, various coins and other items.



**200.** A collection of costume jewellery including silver jewellery.



**201.** Collection of costume jewellery, to include brooches, watches, a jewellery box and other items.



**202.** An assortment of collectors spoons including some silver and a Rolex Lungano spoon.

#### **Artist Resale Rights**

ARR is calculated in GBP. Exchange rates are updated daily.  
ARR is cumulative and applies to lots with a hammer over £1000

£0 - £50,000 - 4%  
£50,000 - £200,000 - 3%  
£200,000 - £350,000 - 1%  
£350,000 - £500,000 - 0.5%  
£500,000+ - 0.25%

ARR is capped at £12,500

† ARR will be subject to additional fees. See last page for more details.