



1. Polly Pocket items.



2. A vintage number plate WG 2268 and Die Cast (boxed).



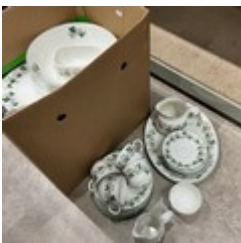
3. Two railway plates, stamped with the number W11459 and another stamped C4153 V2198.



4. Model houses to include Country Lines Collection, Lilliput Lane and others.



5. Collection of ceramics to include three horses, two figurines, vases, two Lladro figures, Kingfisher from Leonardo Collection, Wade figures and other items.



6. Large collection of Royal Doulton 'Tiverton' eight setting dinner service.



7. 1940's AVO Wave Oscillator.



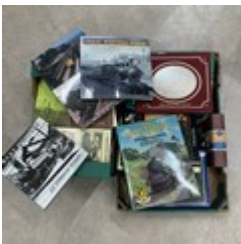
8. Comprehensive collection of 45's singles 1960's - 1980's various artists.



9. Collection of Royal Doulton, Coalport ladies and other figures (9).



10. Collection of glassware, two Waterford brandy glasses, four Harrords tumblers, a Galway glass and selection of others.



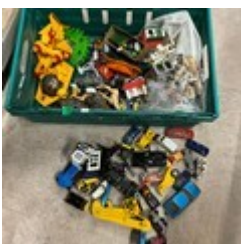
11. 2 Boxes of local interest GWR railway books, history etc. Approx 40.



12. Plaque and rope lock hoist.



13. Collection of ceramics to include Masons teapot, jug and dishes, two Delft vases and other glassware.



14. Collection of animals to include Britains Ltd, play worn vehicles to include Corgi, Matchbox and other toys.



15. Tiffany style lamp.

Untested for electrical safety. Sold as seen.



16. A collection of crystal glassware and two silver decanter name tags.



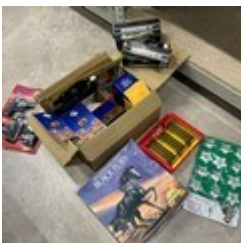
17. A collection of vintage toys to include Fisher Price school and telephone, game, three vintage drawings of planes and a remote car.



18. Collection of metalware and silver plated items to include copper teapot and decorated jewellery box.



19. Collection of cameras to include Canon, Albinar, Casio and other makes.



20. Collection of toys to include boxed Scalextric, boxed Britains Farmyard fences, Black Fury plastic assembly set, a Kate Bush record and other items.



21. Collection of Xbox and Playstation games to include 4 buzz controllers, Playstation 2 Enter the Matrix, Sonic Heroes, Killzones, Assassin's Creed 2, Medal of Honour. Xbox Hitman 2, Area 51, Hitman Contracts etc.



22. A collection of coronation ware, ceramics to include 1897 Doulton Lambeth example.



23. A vintage wooden sledge.



24. Eight branch brass electric candelabra.



25. Collection of silver-plated items including large tray, claret jug, cutlery and other items.



26. Two vintage bottles and stoppers, possibly pharmaceutical jug along with slipware kitchen dairy bowl.



27. Chest of drawers along with a coffee table.



28. A vintage brewers grain shovel.



29. Wicker chair and oak table.



30. Two watercolours along with a Military picture.



31. Mahogany table with leaf extension.



32. Collection of wooden items to include candle sticks, walking sticks, boxes, carved figure, wooden trays and other items.



33. Two baskets.



34. Collection of Le Creuset pans and tea cosses.



35. Collection of whisky and ale jugs.



36. Collection of David Winter cottages some boxed and other items.



37. Vintage sewing box, carved wooden elephant and a carved side table.



38. Two lamp shades and a lamp.

Untested for electrical safety. Sold as seen.



39. Assortment of glassware to include a red Murano glass goblet, paperweights, and other glassware.



40. Collection of mixed ceramics and glassware to include Delft items, Royal Doulton glasses and a lamp.

Untested for electrical safety. Sold as seen.



41. Collection of cameras to include Chinon, Zenite-E, Olympus and other cameras along with several binoculars and other items.



42. Collection of Portmeirion ceramics to include plates, bowls, vases, toast rack, creamer jugs and others.



43. Collection of boxed dolls.



44. Poole Pottery dinner service and another Poole pottery coffee service.



45. Collection of mixed ceramics to include Irish Dresden figures, Poole pottery, Royal Doulton, John Beswick cat, glass vase and other items.



46. Collection of framed prints to include nine WW1 silk postcards in frame and other pictures.



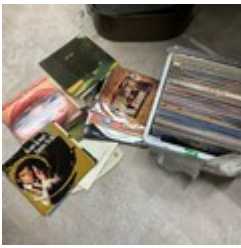
47. A mounted fallow stag head.



48. Kettle, jam pot and spoons and fish knife and forks in case.



49. Star Wars Talking Bank along with a collection of plastic animals and figures and a Matchbox car.



50. A collection of records including Rod Stewart, Status Quo, Meat Loaf, Spandau Ballet and others.



51. Greatest Western Railway items to include GWR Swindon sign, two GWR clocks, GWR metal lamp, coin and other items.



52. Small collection of metalware, cut throat razors and other items.



53. Collection of maps, cigarette cards, photo album and other items.



54. Two bookends along with a metal boot scraper.



55. Uranium glassware and other coloured glassware.



56. A large collection of coin display boxes, contained in two boxes including Hattons and others.



57. Collection of metalware to include tray, lamp, bread bins along with sewing basket, lamp, and other items.

Untested for electrical safety. Sold as seen.



58. A large collection of various train themed puzzles.



59. Four Rolls Royce mirrors and a framed picture of Great Western Railway Express locomotive No. 171.



60. A large collection of coin display boxes, contained in two including Royal Mint and others.



61. Three clocks and a barometer.



62. Three sets of scales and weights, along with other items.



63. Corner unit, small two-drawer unit and chest of pine drawers.



64. Oak drop leaf table and towel stand.



65. Three framed pictures to include one tapestry.



66. Sofa and glass display cabinet.



67. Huina remote dump truck, along with Linde forklift truck, and a Double E digger crane



68. A collection of Airfix and other items.



69. A Brexton picnic set.



70. A collection of Maisons jugs x 6.



71. Collection of ceramic thimbles along with display frame.



72. 3 Regency Fine Arts figurines.



73. Three boxes of assorted glassware and ceramics.



74. A large collection of silver-plated flatware, a teapot and coffee pot, along with a canteen cutlery case and two large fire dogs in the form of a Phoenix.



75. 5 Figurines



76. Box of mixed ceramics including Spode.



77. A pair of wooden sledges.



78. Box of assorted silver plated table ware including a cruet set, butter dish etc..



79. Collection of records, first day covers and other items.



80. Three boxes of assorted glassware and ceramic.



81. A pair of boxed large Riedel wine glasses, accompanied by six Babycham glasses



82. Three Royal Doulton ceramic figures



83. A collection of brass taps, door knobs handles and other items.



84. A Michael/Paul Vignoles 18 inch Claddagh Bodhran with two tippers. Labelled 'Claddagh Musical Instrument. Michael & Paul Vignoles Specialists in Bodhran and Uilleann pipes'.



85. Lamp, coal scuttle and other items.



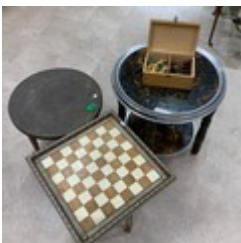
86. A fine collection of Bristol-style blue glass, some Scandinavian-style examples, various small hand-painted shot glasses, and a paperweight.



87. Royal Albert service and other items.



88. Mid century three shelf bar with lighting.



89. Chess table on stand with box of chess pieces, brass topped table on two tier table.



90. Wooden stool, barometer, and two wooden boxes.



91. A leather desk chair on a swivel base.



92. Mid-century glass table.



93. Wooden box contained chess pieces.



94. A pair of Lalique cherub bookends.



95. A pair of top hats Swindon maker.



96. One Wadeheath jug and ginger bread vase.



97. Collection of pen knives to include a Technisub divers knife.



98. Two reproduction Flintlock pistols.



99. Two framed oil and watercolour pictures of rustic scenes.



100. Marianne Starck, Denmark, for Michael Andersen & Son, a mid-century ceramic mirror, 23cm x 17.8cm.



101. Collection of costume jewellery including pearl necklaces.



102. Collection of coins and notes and other items.



103. Collection of marbles.



104. A pair of metal signs in new old stock condition.



105. Two silver pocket watches, along with various costume jewellery and Clarice Cliff jug.



106.A silver plated and cut glass decanter and table set.



107.Collection of Viners of Sheffield cutlery by Gerald Benney.



108.A spelter figure of a man and horse, a West German figure of a donkey, a Hornby OO clockwork train card case with cards, and a silver-plated tray.



109.A collection of various watch straps.



110.Noomi Backhausen, for Søholm Denmark, a ceramic wall plaque of standing girl.



111.A collection of 13 fashion watches to include a Timex example and an Etienne example.



112.A vintage watch (manual winding) and two silver bangles.



113.Jorgen Jensen, Denmark, a pewter and amethyst set pendant/necklace.



114.A white metal Southeast Asian pot with silver spoon. Gross weight 53g.



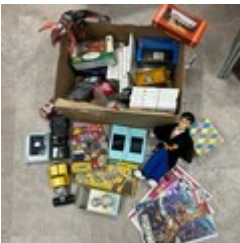
115.Wing back chair.



116.Yew wood twin pedestal desk with a leather insert.



117.Three decorative rugs (2 larger ones).



118.Box of toys to include Beatrix Potter books, boxed Hornby and Corgi and other items.



119.A model Gatling gun, various cameras, ceramic display cases and a group of three white resin busts by A.Giannelli.



120.A silver brooch of a fairy, Birmingham, 1988, along with a blue john brooch marked "Silver", one other blue john brooch, and a moss agate brooch.



121.A collection of costume jewellery, including an Omega watch face, fob watch chain, brooches, vesta cases, and other items.



122.Georgian mahogany single drawer Pembroke table with rounded leaves and pierced corner shelf bracets raised on square tapering supports to casters



123.Collection of cigarette cards to include RAF Badges, flowers, radio celebrities etc.



124.A collection of pre 1947 and 1920 silver coinage along with various other coins, Swiss francs, pre 1920, 29 grams 1947, 42 grams.



125.Corgi Aviation Archive, a boxed 1/72 scale AA38602 BAC TSR-2, XR222 Imperial War Museum, Duxford, Cambridgeshire (front end missing)