



- 1.** An Art Deco-style agate and marcasite silver ring, along with four other gem-set rings, and a pair of drop earrings. £30-£50



- 2.** A string of Mikimoto cultured pearl necklace with a silver clasp in an associated case. £30-£50



- 3.** Tiffany & Co Sterling Silver Pendant necklace. The pendant in the form of a heart, L40.5cm, with original dust bag and presentation box. £50-£80



- 4.** A solitaire pearl necklace, L61cm, in its original box, a cultured pearl necklace, and a pair of pearl earrings. (3) £50-£80



- 5.** A single-strand pearl necklace with a yellow metal clasp set with a single pearl, each pearl individually knotted. Length 45cm. £20-£40



- 6.** A comprehensive collection of Golly badges, including Golden Shred, a radio with earphones, etc. £40-£60



- 7.** A collection of five Arts and Crafts buttons, each stamped Himsworth, Sheffield, and with a monogram, along with a pair of continental silver and enamel cufflinks, 47.6 grams. £50-£80



- 8.** A large collection of miscellaneous costume jewellery, including beaded necklaces, watches and watch parts; together with Parker pen sets and other items. £40-£60



- 9.** A collection of miscellaneous costume jewellery, including watches, coins, pendant, fob chain and other items. £50-£70



- 10.** A collection of costume jewellery, including a rolled gold love heart locket, a silver charm bracelet, a silver brooch, a silver cross and various other items. £70-£100



- 11.** A collection of mixed costume jewellery, including watches, brooches, smoking pipes, and other related items. £40-£60



- 12.** A silver and abalone shell bangle, Sheffield, Ralph Weston, along with an Edwardian pendant locket, silver twist bangle, silver child's bracelet, two silver lockets, and three silver gem set rings, total weight 98 grams. £70-£100



- 13.** A large collection of costume jewellery, including brooches, earrings, watches, silver plated cutlery and other items. £50-£80



- 14.** A silver "Monet" brooch, by Paula Bolton, set with opals, moonstone, and amethyst, along with a Celtic-style silver and enamel brooch, Birmingham 1960, W H Darby & Sons, a Shetland silver brooch and one other modernist gold and silver brooch. £70-£100



- 15.** A collection of three Pandora charm bracelets, along with three silver spoons to include a Georgian berry spoon, a Cartier box and a ladies' Sekonda wristwatch. £80-£120



- 16.** A large collection of miscellaneous costume jewellery, including watches, brooches, pearl necklaces, pen knife, rings, cameo brooches, and various other related items. £80-£120



- 17.** A collection of costume jewellery to include art deco style beaded necklaces, decorative bracelets, ladies wristwatches, heavy silver Elizabeth Hospital brooch (23 grams), and various other pieces. £30-£50



- 18.** A collection of costume jewellery, including a fresh water cultured pearl necklace, brooches, and various other pearl necklaces. £40-£60



- 19.** An assortment of costume jewellery, including silver, a Rado boxed watch, cuff links, a Zippo lighter, silver tape pots, etc. £80-£120



- 20.** An assortment of costume jewellery, to include a 9ct gold ring, and a pendant necklace, weight 2.5 grams; along with earrings, necklaces, brooches, etc. £80-£120



- 21.** An assortment of costume jewellery, including pearl necklaces, brooches, rings, gold-plated gate bracelets, earrings, and other items. £50-£80



- 22.** A collection of costume jewellery, watches, coins and a silver-backed dressing set and various other items. £70-£100



- 23.** An assortment of costume jewellery, including silver, necklaces, bracelets, earrings, watches, earring and bracelet sets, etc. £60-£80



- 24.** A collection of costume jewellery, to include necklaces, bracelets, brooches, a ladies' Gucci style watch, various fashion watches and other items. £40-£60



- 25.** An assortment of costume jewellery to include various gentlemen's cufflinks, brooches, tie pins and clips, mixed necklace pendants, bangles and other items, contained in a glass-topped display case. £40-£60



- 26.** A large collection of costume jewellery, including pocket watches, watches, pen knives, Egyptian scarab ring, Pietr Dura set panel bracelet, along with a gold-plated engraved locket, silver medal, and various other items. £100-£150



- 27.** A 9ct gold CymaFlex watch, 24mm case, groos weight 26.8 grams. £80-£120



- 28.** A gentlemen's Seiko analogue quartz chronograph and Moon Phase display gold-plated watch, with manual and guarantee, and with original purchase receipt. £40-£60



- 29.** A gentlemen's vintage Hamilton St James watch with a chrome expanding bracelet strap, along with an associated box. £70-£100



- 30.** An assortment of wristwatches, a locket, tie pins and a Masonic silver enamel Steward's medal, etc. £50-£80



- 31.** A collection of miscellaneous watches to include gentlemen's Citizen examples, a ladies' Citizen, a Seiko 5-day date, a vintage blue-faced rotary, along with various other fashion watches and alarm clocks. £40-£60



- 32.** Silver pocket watch by J. Snook, along with three ladies' pocket watches and one boxed Rotary ladies example, a boxed Maurice Lacroix gentlemen's wristwatch, and others. £40-£60



- 33.** A gentlemen's Longines wristwatch, with gilt dial, marked Longines, with baton increments and date aperture to three, with gilt case and bracelet, in a box with paperwork. £50-£80



- 34.** An assortment of wristwatches, gentlemen's and ladies', coinage, cufflinks, a leather wallet, etc. £40-£60



- 35.** A collection of five fashion watches, including Ellesse, Rotary and Sekonda, along with a pair of Simon Carter cufflinks. £40-£60



- 36.** A Swiss Play chronograph rose gold-toned metal bracelet and diamond-embellished bezel wristwatch, with original paperwork and presentation case. Together with a Swiss Balance gentlemen's wristwatch in its original case. £150-£250



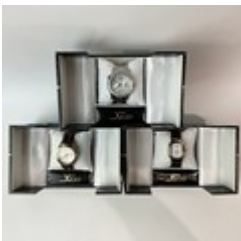
- 37.** Rotary British Legion Special Edition WWI Centenary watch, commemorating the 100th anniversary of the end of WWI. With a white dial featuring a prominent red poppy at the 12 o'clock position, detailed numbering, with the 11th hour and 11th day coloured in red to represent the Armistice. Together with a Rotary Elite wristwatch, both in original presentation case. £100-£150



- 38.** An Xezo Tribune 2121 SB sterling silver cased wristwatch. With a silver dial and diamond batons with Roman numerals at 12 o'clock and 6 o'clock, with day and date aperture, with original paperwork and presentation case. £100-£150



- 39.** Three assorted wristwatches, Royal Army with a black face, Bulova Sea King with date aperture and an Auguste Galan automatic wristwatch. £100-£150



- 40.** Xezo Air Commander D44-S limited-edition pilot's watch. Xezo Maestro automatic Vermeil wristwatch and a Xezo Freelancer limited edition wristwatch with gold tone case. All in original presentation cases with paperwork. (3) £100-£200



- 41.** An Ingersoll gold-plated and mother-of-pearl dial, date window at three o'clock, with a stone-set bezel. Together with an Ingersoll Diamond 1G0152DM wristwatch featuring an 18-carat gold-plated case and bracelet. Both in the original presentation case with documentation. (2) £80-£120



- 42.** Box of assorted wristwatches; including a TCM, Sekonda, Rotary, Allenby, Rotary, etc. £50-£80



- 43.** An assortment of wristwatches, all boxed, including an Ascot moon phase, Aviva, Mondaine, Citizen, etc. £50-£80



- 44.** A gun metal pocket watch marked Hero, along with a silver air raid watch, a silver plated belt buckle, a poison vial, a Women's Volunteer badge, and three other watches. £30-£50



- 45.** A Victorian silver pocket watch, along with a ladies' silver pocket watch, two other pocket watches, and a compass. £50-£80



- 46.** A silver J W Benson pocket watch in original fitted case, along with a 1935 King George V Silver Jubilee medal. £80-£120



- 47.** An American gold-plated Elgin pocket watch, with a white dial and Roman numerals and a subsidiary dial. £40-£60



- 48.** A lady's seven-piece silver nail set with engine turned decoration and a monogrammed cartouche, hallmarked Birmingham, 1951, maker Daniel Manufacturing Company, contained in a fitted case. £80-£120



- 49.** A cased set of silver spoons and sugar nips, along with five loose silver spoons, a silver-bladed pen knife with a mother-of-pearl handle, and three silver-plated spoons. Gross silver weight 114 grams. £50-£80



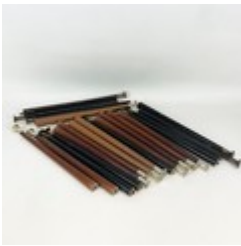
- 50.** Silver-plated antique pedestal punch bowl with lion-mask handles and scalloped, gadrooned decoration, with weighted base. H19cm x Diameter 31.5cm. £20-£30



- 51.** An 800 standard silver Egyptian dish, engraved with standing figures, one playing harp, 17cm diameter, 127 grams. £80-£120



- 52.** A pair of silver mounted decanters, the glass etched with foliate and star decorations, the silver mounting with banded engraving and cherubim figures, the stoppers with silver depictions of seated cherubim holding a bottle and glass, each decanter with silver hallmarked label, each with various hallmarks to include Chester and London. H27cm. £150-£250



- 53.** Collection of twenty Dansette legs, with self-adjusting brass feet, various lengths and colours. £20-£30



- 54.** Three-piece Art Deco style silver dressing table set, a hand-held mirror, a hair brush and a clothes brush, all with engine turned decoration. Hallmarked Birmingham 1985, maker Mappin & Webb. £80-£120



- 55.** A Georgian silver serving spoon, hallmarked London 1799, maker Thomas Wallis II, weight 61 grams. £40-£60



- 56.** Vintage 1970s Testo Reaction Meter coin-operated pub game (drunk tester). The principle to crudely test people's reaction to determine whether or not they should drive home from the pub. H55.5cm x W31.5cm x D7.5cm. £80-£120



- 57.** A pair of silver candlesticks, standing on circular bases, 650 grams weighted, 17cm high. £60-£100



- 58.** A collection of six silver engine-turned napkin rings, together with a silver teaspoon, various dates and marks, weight 125 grams; along with two silver-plated napkin rings. £60-£80



- 59.** Late 19th-early 20th-century terracotta pancheon, treacle-glazed exterior and applied handles, diameter, 38cm. £30-£50



- 60.** A silver-plated WMF basket and green glass liner. Hallmarked to the base numbered 243, the body with pierced decoration, with a carrying handle. H17cm. £30-£50



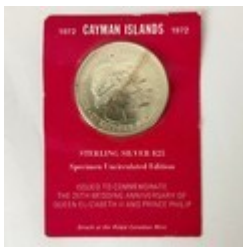
- 61.** A large collection of silver-plated items, including bangles, jewellery, cased cutlery, serving trays, goblets and other items. £50-£80



- 62.** An antique apprentice-style miniature mirror-backed kitchen dresser money box. Circa 1900. H24cm. £20-£30



- 63.** Two George III 1920s silver Crowns, along with an 1822 silver Crown. £80-£120



- 64.** Cayman Islands \$25 sterling silver coin, struck at the Royal Canadian Mint. £40-£60



- 65.** Early 19th-century burr walnut reading table, the circular top above a revolving galleried book trough, with a revolving telescopic candle holder, on a quadripartite base with bun feet and inset castors, H68cm x Diameter top 42cm. £60-£80



- 66.** A large collection of gold-plated collector coins including the Titanic, five-coin sets, Liverpool football club, and various others. £70-£100



- 67.** A 1793 Coventry Half Penny token with a Latin inscription 'PRO BONO PUBLICO', 1906 American 1 Cent coin, a collection of pre-1947 silver coinage, approx 296 grams, a small collection of pre- 1920 silver coinage, approx 30 grams, and various other coins. £80-£120



- 68.** A Scottish silver Victorian brooch featuring a saltire cross motif with polished agate, and jasper 'St Andrew' with date lozenge to the verso. £30-£50



- 69.** Folder of mostly coin first day covers, including a Millennium silver coin and banknote cover, limited edition No 213/1000. £50-£80



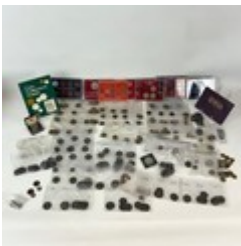
- 70.** A silver 1984 Olympiad dollar, 1894 Victorian silver crown and various other coins. £50-£80



- 71.** WWI interest: Hallmarked silver Black Watch sweetheart brooch, Birmingham marks for 1914, maker Robert Chandler. £20-£30



- 72.** An assortment of world coinage, including commemorative, Victorian, Georgian, and Edwardian, to include some silver. £80-£120



- 73.** A good collection of miscellaneous UK and world coins, including some silver examples and presentation sets. £50-£80



- 74.** A 19th-century lignum vitae tree carved novelty lidded pot in the form of a barrel container, H9cm. £20-£30



- 75.** A collection of vintage bank notes, emergency notes and sequential note sets, to include various English £5 and £1 notes, Russian notes, Egyptian notes, Polish notes, Angola and various others. £100-£200



- 76.** A large collection of miscellaneous badges, including Metropolitan Police, Greater Manchester Police, transport badges and various other badges, along with a Goliath pocket watch. £50-£80



- 77.** Novelty pair of early 20th-century silver-plated tongs by Walker & Hall, for smoked fish, the tips modelled as salmon. £10-£20



- 78.** A late victorian early 20th-century Champagne tap in a fitted leather case. Total length approx 10cm. £40-£60



- 79.** Local interest - A 19th-century wine/spirits brass rotating stamp, impressed "J E Sell, The White Hart, Calne" Wiltshire, with various named wines and spirits, maker's mark Joseph Long, 20 Little Tower Street, London. £40-£60



- 80.** A Nepalese shrine bell, 11cm high, along with a Cleve Art Line bronze figure of two outstretched figures, 12.5cm high. £40-£60



- 81.** A pair of brass and iron fire dogs, the ends modelled as a seated cat and a seated dog. H25.5cm x L32cm. £40-£60



- 82.** A 20th-century copper gong possibly a former military shell in a mahogany frame along with a beater. £50-£80



- 83.** A Swarovski crystal glass, Annual Edition 1998 - Fabulous Creatures - The Pegasus. £40-£60



- 84.** A collection of Waterford Boyne pattern glasses, in the original box. £40-£60



**85.** A large collection of Waterford crystal glasses, mostly in the Colleen pattern. £100-£150



**86.** A Bohemian ruby glass lustre with glass drops and etched decoration. H33.5cm. £50-£80



**87.** A Colin Heaney red art glass goblet, H25cm, signed and dated 2002. £30-£50



**88.** A Stewart Ackroyd glass scent bottle of abstract form, H17.5cm, together with a cylindrical glass vase with applied rope decoration, H26cm. (2) £40-£60



**89.** A limited edition 397/2000 with original sticker, Iittala Oriel Toikka glass cube, named and dated 2004. H8cm. £40-£60



**90.** Two John Ditchfield for Glasform lustre-studio glass frog paperweights. H14.5cm, both signed to the base and with original labels. (2) £70-£100



**91.** An early 18th-century onion bottle of small proportion, of iridescent patina, H13cm; along with a ginger beer bottle and three other bottles. £50-£80



- 92.** A 19th-century Staffordshire cow creamer, standing cow facing to the right with a seated figure of a milkmaid on a shaped plinth, H13 x L19cm. £40-£60



- 93.** A Royal Doulton figure The Medicant HN 1365, Tigger signs the Rissolution, etc. To include two Royal Worcester candle snuffers, the Motorist-Male and Motorist-Female and two Toby jugs. (5) £50-£80



- 94.** Lladro figurine 'You're Everything to Me', in original box. H34cm. £50-£80



- 95.** A Lladro Inspiration Millennium figurine entitled 'New Horizons', in original box, H35cm. £40-£60



- 96.** A Lladro Inspiration Millennium figurine entitled 'Milkyway', in original box. H38cm. £50-£80



- 97.** A Lladro Inspiration Millennium figure entitled 'Rebirth', in original box. H41cm. £80-£120



- 98.** Collection of nautical figures to include Royal Doulton The Captain, Royal Doulton The Lobster Man, a Royal Doulton Old Salt teapot with mermaid handle, a jug and one other figure. Tallest H24cm. £60-£80



- 99.** A Royal Worcester figurine, Katie's Day Bathtime, 16cm, and a Royal Doulton figurine, Sleepyhead, HN3761, H9.5cm. (2) £30-£40



- 100.** An early 20th-century brass filigree Indian wine/liqueur bottle cover decorated with vines and elephants. Used in the early days of motoring by the wealthy for picnics and outings. H29cm. £20-£30



- 101.** Set of three graduating Beswick flying seagulls, mould numbers 922-1, 922-2 and 922-3; together with a Lladro sculpture of a fantailed dove and one other figure of a seagull. £40-£60



- 102.** Two Beswick ceramic pigs CH Wall, CH Boy 53 and CH Wall Queen 40, to include a Beswick grey horse and foal, and two Royal Doulton figures. (8) £40-£60



- 103.** A vintage oak copper-bound coopered cider jug, with channelled handle, H26cm. £20-£30



- 104.** A collection of Beswick figures, to include a pair of hunting figures, and a group of five hounds and a fox, all stamped to the underside with Beswick (8). Tallest example 21cm. £100-£150



- 105.** A pair of 20th-century French majolica wall plaques of a male and female, each decorated in polychrome colours with a woven basket, each impressed EM to the reverse, possibly Quimper. H31cm x Diameter 21cm. £50-£80



- 106.**An Art Deco (circa 1925) limited London No24 brown mottled bakelite thermos jug, Pat No 327838, H24.5cm. £20-£30



- 107.**A Royal Copenhagen mermaid figure, model 3321, along with a Wade mermaid figure and a Worcester vase. £60-£80



- 108.**Collection of Toby/character jugs to include Royal Doulton Long John Silver, Old Salt, Lobster Man, and four others. £50-£80



- 109.**A 20th-century cut glass scent bottle, the hallmarked silver collar with marks for London 1928, with an intaglio cut frosted decoration of a female figure stopper, H9cm. £30-£50



- 110.**A 20th-century Fielding Devon vase in blue lustre, decorated with various birds and plants, 23cm high. £30-£50



- 111.**A signed CA and dated 1996 studio art ceramic vase with bark effect pattern, H31.5cm. £40-£60



- 112.**An early 20th-century (circa 1912) movie company novelty paperweight used for marketing. Featuring the British actress and star of the silent movies, Gladys Sylvani (1884-1953). Produced by the film studio The Hepworth Stock Company. £20-£30



- 113.**A 20th-century Moorcroft vase, in the Magnolia pattern, stamped to the base "Moorcroft", 23cm high. £30-£50



- 114.**E Fisher Royal Doulton jug, H19cm, and an Art Nouveau Royal Doulton vase, H26cm. (2) £50-£80



- 115.**A late 19th-century souvenir crystal tumbler by Baccarat, to commemorate the newly erected Eiffel Tower, decorated with an image of the Eiffel Tower to one side and the Trocadéro Palace to the other, further engraved 'Thomas 1890', H9cm x Diameter 7cm. £20-£30



- 116.**A vintage Wedgwood blue Jasperware cheese dish and cover, a Wedgwood green Jasperware lidded pitcher jug and a Wedgwood blue Jasperware vase. £60-£80



- 117.**Royal Worcester blush ivory centre-piece shell bowl, No. 126, circa 1915, stamped Royal Worcester to the base. H15cm X W28cm. £30-£50



- 118.**A Victorian 19th-century duck-billed cast iron saddle rack with a crop hook and gadrooned decoration. Maker's mark J Barton Oxfords, with date lozenge, mounted on stained planks. W80.5cm. £30-£50



- 119.**Karl Tutter signed 4-place candlestick table centrepiece, with two central cherubs playing musical instruments, flanked by four candle sconces, on a Rococo-style base. White glaze with gilded decoration. L41cm x H16cm. £40-£60



**120.**A Paul Smith for Thomas Goode, 'signature stripe' bone-china teapot, featuring multicoloured stripes and 22 karat liquid gold leaf trim. signed to the base. £40-£60



**121.**A novelty pair of mid-20th-century painted wooden earrings, modelled as dice, with screw backs. £15-£25



**122.**Collection of Royal Albert Old Country Roses to include vases, ginger jar, jug, clock, model of a swan and other items. £40-£60



**123.**A collection of Royal Albert Old Country Roses tableware to include salt and pepper shakers, lidded sugar bowl, sauce boat, trinket box, bowls, etc., along with Worcester Beaufort graduating plates, dated 1981. £40-£60



**124.**A Victorian mahogany cabriole-legged stool with carved scrolls and an early knitted kilim-style top cover, the stool of square form, H43cm x W44cm. £50-£80



**125.**A six setting Wedgwood florentine W2714 dinner and coffee service including two lidded terrines, coffee pot, sugar bowl and cover, creamer etc. £40-£60



**126.**An Aynsley tea set decorated with floral sprays of flowers and plants, with a gilded and green border. £40-£60



- 127.** Three 1966 Jules Rimet Cup World Championship official souvenir programmes, England July 11-30, each deadstock programme with original protective brown paper envelope; together with their original packaging (London to Chester via British Rail), marked 'URGENT'. £30-£50



- 128.** A collection of miscellaneous Shelley ceramics, including Shelley Queen Anne Trees, Balloon Tree pattern, My Garden pattern, and various other Shelley ceramics. £50-£80



- 129.** A copper samovar, H43cm; along with a large Evans and Sons 1915 hot water jug with swing handle and a hanging cauldron. £40-£60



- 130.** A pair of 19th-century hand-forged cast-iron cauldron-shaped planters on cabriole legs, signs of original paintwork. H37cm. £40-£60



- 131.** A large flagon, impressed with W. Fleming, Family & Italian Grocer, 25 Stephens Green North, Dublin. H52cm. £40-£60



- 132.** A collection of terracotta jars, including French confit pots, slipware decorated jugs and a stoneware bottle, various sizes. Tallest (bottle) H36cm. £80-£120



- 133.** A vintage porcupine quill box, with brass swing handles, along with a vintage Rolex watch box, and a tea box carved with an elephant. £80-£120



- 134.**Liz Walmsley and Jim Partridge bowl (by repute), natural wood interior, textured green rim with decorative silver spots, monogrammed to the verso in pencil. Diameter 27cm. £50-£80



- 135.**Mario Badioli, Murano glass sculpture of a kneeling nude lady on a rock, original Murano label, and signed and dated to the base, M. Badioli 2003. H42.5cm. £300-£500



- 136.**A Murano glass nude sculpture of a mermaid. A Carole Stupell design, handcrafted and signed by Renato Anatra. With the original Murano sticker to the base. H29cm £200-£300



- 137.**A contemporary wirework and plaster sculpture of a lady playing the cello. Unknown artist. H68cm. £30-£50



- 138.**A pair of Agatha Walker The Beggar's Opera figures in patinated wax circa 1920s comprising: Mackheath and Polly Peachum with inscription to the base: 'Without disguise, heaving sighs, dotting is, my constant heart discover', dated 1921; Lucy Lockit inscribed 'Violet Marquesita' to the base dated 1921. H24cm. £40-£60



- 139.**Vivien Mallock (English 20th-century), bronze study of a tawny owl, raised on a green patinated circular-shaped base, H38cm. £1000-£1500



- 140.**EUGENE ANTOINE AIZELIN (French, 1821-1902), bronze figure 'Mignon', finely patinated bronze study of a seated young lady with lute at her feet, signed to the base "E. ALZELIN"; cast by the F. Barbedienne foundry in Paris. H32cm. £400-£600



**141.**Peter Cosslet (British, 1927-2022)  
Winter scene, sheep and farmers  
Acrylic on canvas  
Signed lower left  
59.5cm x 44cm

£80-£120



**142.**Two MAC comical cartoon prints, one titled "If you're going to spend another day torturing your effigies, Maggie dear, I think I'll slip out for a few holes" (relating to Margaret Thatcher); the other titled " Really? Three Leeds football fans? - You spoil that Rotweiler Mr Harrigan." (Bournemouth promenade).  
frames.

£100-£150

F&G  
Approx 53cm x 37cm



**143.**Vittorio Marusso (Italian, b1867)  
Three females  
Watercolour  
Signed lower right V.rio Marrusso, Venezia  
38cm x 30cm

£30-£50



**144.**A G Philip (contemporary)  
Mountain river scene, possibly Lake District  
Oil on canvas  
Signed lower right  
Oak frame  
59cm x 44cm

£30-£50



**145.**Neil Simone, (British, contemporary)  
Landscape painting, artist work on easel with the artist's view as the background  
Oil on board  
Framed  
60cm x 75cm

£70-£100



**146.**Ian Parker (English, b. 1955)  
Still life of peaches in a bag  
Oil on board  
Signed lower right 'I Parker'  
Framed  
36.5cm x 30cm

£70-£100



**147.**Seren Bell (English, b.1950)  
From Waun Fech  
Depicting three sheep, country scene  
Pencil and ink  
Signed lower right  
F&G

£70-£100

44cm x 44cm



**148.**William Henry Stockman (British 1935-2021)

£40-£60

Harbour scene  
Acrylic on canvas  
Signed lower left W H Stockman  
39.5 x 29cm



**149.**Continental 19th-century

£70-£100

Ships at anchor and under sail in the foreground  
Oil on panel  
Signed lower left (indistinct)  
Set in a plaster-and-wood gilt frame, decorated with  
acanthus leaves  
18cm x 23cm



**150.**A vintage oak snooker triangle, circa 1900, L35cm.

£20-£30



**151.**Portrait of Lord Nelson, with British fleet under sail in the background

£50-£80

Mezzotint engraving  
Set in an ebonised and gilt frame, and glazed  
No printer's marks  
42cm x 63cm



**152.**Goldsmith Early 20th-century

£50-£80

Coastal seascape, figures on the beach  
Signed and dated lower left, 'Goldsmith 1912'  
Watercolour  
F&G  
36cm x 30cm



**153.**A late Victorian milk/cream jug and cover, the jug and cover modelled as a bunch of green grapes, the spout modelled as folded vine leaves, the gilded handles modelled as stalks, H11cm.

£15-£25



**154.**David Lucas (British, 1802-1881)

£50-£80

The Grand Canal, Venice, engraved from the original drawing by James Duffield Harding (British, 1797-1863), originally published November 1838  
Coloured engraving  
Framed and glazed

70cm x 56.5cm



**155.**James Salt (BRITISH 1850-1903)

£400-£600

Venetian Scene  
Oil on canvas  
Signed to bottom right  
Framed and glazed  
60cm x 40cm.



**156.**A vintage, circa 1900, maritime ship's wheel with a carved wooden rim with six turned spokes, a brass centre with original brass fittings and original domed-topped handmade screws, diameter 51cm.

£50-£80



**157.**Anton Warren (British)  
Boat yard scene  
Oil on canvas, (palette knife)  
Signed lower right  
Framed  
74.5cm x 62cm

£50-£80



**158.**Early 19th-century, British

£150-£250

Portrait of a young girl  
Oil on canvas set within a finely detailed gilt and wood frame  
To the verso, with the framer's label: 'Staples Maker of Picture Frames 2 Ravensfell Parade, High Street, Bromley.'  
41.5cm x 52cm  
64.5cm x 74cm (frame)



**159.**An early 19th-century carved coconut 'bugbear' style money box with screw ring to the top, H10cm x W10.5cm.

£20-£30



**160.**FRANK PATON (1855-1909)

£30-£50

Titled "They Won't Be Happy Till They Get Em", set within a border of comical scenes  
Signed lower right  
Framed print  
21cm x 15cm  
Together with two similar prints.

**161.** John Makepeace, OBE (British, Designer, b.1939) £50-£80

The Knot Chair

Official etchings for the 1994 Chicago International Expo  
Art & Design Fair 1994

Limited Edition of 100

Each signed 'Makepeace' (lower right) and numbered  
(lower left)

(40+ etchings in this lot)



Award-winning British Furniture Designer, John Makepeace OBE, specialises in the design of bespoke luxury furniture.

**Provenance:**

The "Knot" chair was originally commissioned as a set for a private Chicago home. The design explores the concept that comfort in seating can be derived from sculpted profiles rather than soft surfaces. These chairs inspired the 100 limited edition etchings for the event catalogue and were acquired post-event directly from the event in Chicago, USA. A version of Makepeace's work is held in the permanent collection of the Art Institute of Chicago, USA.

**162.** An original 1840 Penny Black stamp with T & J corner letters. £30-£50



**163.** Norman Reginald Baggaley (British-Australian, 1937- † 2022) £100-£150

Abstract Landscape, 1965 (Australia)

Oil on board

Signed 'N R Baggaley 1965' (lower right)

59cm x 45.5cm



Baggaley was exhibiting in London before travelling to Australia in 1965. Baggaley held several high-profile academic positions across Australia: Ballarat College of Advanced Education: served as the Head of School and Dean of the School of Arts from 1978 to 1980. Prahran College of Advanced Education: served as the Dean of the Faculty of Art and Design (1980–1982) and later as Professor of Visual Arts and Dean (1982–1991). Victorian College of the Arts (VCA): Appointed Associate Professor and Dean of the School of Art at the University of Melbourne's VCA in 1991. Salisbury School of Advanced Education: Served as Principal Lecturer and Head of Art. Exhibitions: Baggaley participated in select group exhibitions in London in the 1960s and in Melbourne galleries such as the Realities Gallery in 1982 and David

Ellis Fine Art in 1987. His artworks are included in collections around Australia, such as the R & I Bank Collection, Perth, Artbank, University of Adelaide, and Victoria College.

In 1998, Baggaley notably received the ACUAD Fellowship Award for his career in development and management of a school of Arts and Design.

Note: Artist Resale Rights may apply

- 164.**Alberto Gutiérrez (Mexican, Contemporary) Apunte Excavaciones / Yagul, Oaxaca, 1989 £40-£60  
Watercolour on paper  
Signed 'Alberto Gutierrez' (lower right)  
20cm x 27cm  
47.5cm x 52.5cm (Gilt framed and glazed)



Yagul is a central part of the Prehistoric Caves of Yagul and Mitla UNESCO World Heritage site.

- 165.**An early 20th-century McMillan's Patent automatic dome-topped homing pigeon timing clock, patent No 10084, H12cm. £40-£60



- 166.**Colleen Farr, RCA (British Designer, b.1930s) Original Green / Grey / Purple Geometric Textile Design, c1950s £40-£60  
Ink on paper  
52cm x 53cm (grey frame)



**Provenance:**

Acquired direct from the designer's studio. Colleen Farr is a prominent British textile designer and educator who trained at the Royal College of Art (RCA) in the early 1950s.

- 167.**Colleen Farr, RCA (British Designer, b.1930s) Two Original Red / Grey Textile Designs, c1950s (in one frame) £40-£60  
Ink on paper  
83.5cm x 44cm (grey frame)



**Provenance:**

Acquired directly from the designer's studio. Colleen Farr is a prominent British textile designer and educator who trained at the Royal College of Art (RCA) in the early 1950s.



- 168.**A 1950s black and gilt enamel poodle dog brooch, possibly French. £20-£30



- 169.**Colleen Farr, RCA (British Designer, b.1930s) Two Blue / Grey Original Textile Designs, c1950s (in one frame) £40-£60  
Ink on paper  
68cm x 38cm (grey frame)

**Provenance:** Acquired directly from the designer's studio. Colleen Farr is a prominent British textile designer and educator who trained at the Royal College of Art (RCA) in the early 1950s.



- 170.**Colleen Farr, RCA (British Designer, b.1930s) Original Black and Grey Textile Design, c1950s £40-£60  
Ink on paper  
38cm x 40cm (grey frame)

**Provenance:** Acquired directly from the designer's studio. Colleen Farr is a prominent British textile designer and educator who trained at the Royal College of Art (RCA) in the early 1950s.



- 171.**A 1902 souvenir vulcanite vesta, to commemorate the coronation of Edward VII, L5cm. £10-£20



- 172.**Colleen Farr, RCA (British Designer, b.1930s) Three Original Textile Designs, c1950s (in one frame) £90-£120  
Ink on paper  
56.5cm x 25.5cm (grey frame)

**Provenance:** Acquired directly from the designer's studio. Colleen Farr is a prominent British textile designer and educator who trained at the Royal College of Art (RCA) in the early 1950s.



- 173.**Leigh Glover (British, Contemporary) £500-£800  
† Millennium Bridge, 2000: A panoramic view of London from St Paul's Cathedral on the North Bank and Tate Modern and Shakespeare's Globe on the South Bank of the River Thames  
Watercolour on forty-five (45) individual card panels (3 x

15 panels) laid onto linen  
Signed 'Leigh Glover' and dated '2015', signed at his studio during the private sale of this important work of art commemorating the opening of The Millennium Bridge in 2000  
153cm x 49.5cm (image)  
Unframed

**Provenance:**

Acquired directly from the artist's Cotswold studio in 2015.

Leigh Glover is a contemporary British artist based in the Cotswolds, specialising in vibrant paintings of landscapes, gardens, and the natural world. Born in England, he studied at Oxford Brookes University and Heatherley's School of Fine Art in London. Glover has exhibited with prominent societies, including the Royal Institute of Oil Painters and the BP Portrait Award. Notably, he was a participant in the fifth season of Sky Arts Landscape Artist of the Year in 2019.

Note: Artist Resale Rights apply



- 174.**A pair of Art Deco chrome tailor's scissors by Nogent, with striking handles, stamped 'Nogent' to one side and 'Chrome' to the other, L24cm. £10-£20



- 175.**Grace Gardner (British-American, b.Chicago, Illinois, 1920-2013) £40-£60  
Abstract Ribbons  
Oils and mixed media on card  
Signed in pencil 'Grace Gardner' (lower right)  
Annotated by the artist as a memento and token of friendship following an encounter on a cruise ship (verso)  
14cm x 18.5cm (image)  
30cm x 34cm (gilt framed)

American-born abstract painter (1920 – 2013) who became a prominent figure in the South West UK art scene after moving to Cornwall in 1984. Gardner was a member of Portscatho Art Society and a major supporter and benefactor of the Falmouth Art Gallery. In 2004, she donated a significant collection of her own works and contemporary Cornish art, now known as 'The Grace Gardner Gift'.

**176.** Sara Newman (British, Contemporary) £70-£100

'Titanic' (White Star Line) and 'The Caledonian Blue'  
(London and North Eastern Railway), 2012

Pair of mixed media miniature dioramas (2)

Signed 'Sara Newman' and dated '2012' in metallic silver  
ink (verso)

24.5cm x 29cm (image)

29.5cm x 34cm (box frame)



Sara Newman is a British contemporary mixed media artist and interior design consultant based in rural Kent. She is known for creating intricate miniature picture scenes and hand-etched glass.

**177.** Laurence Llewelyn-Bowen (British, Contemporary, b.1965) £30-£50

Exotic

Mixed media hand-embellished print

Signed in pencil to the margin and numbered 151 / 495

Gilt-framed and glazed

20cm x 20cm (image)

66cm x 63cm (framed)



**Provenance:**

Laurence Llewelyn-Bowen's "exotic" hand-embellished prints are part of his fine art collections that blend historical themes with a contemporary, flamboyant aesthetic. These works often feature hand-applied copper, gold, and silver leaf, elevating them to a mixed-media status between a print and an original painting. DeMontfort Fine Art Gallery C.O.A. (verso).

**178.** Norma Jameson, RBA, ROI, (British, b.1933) Textile † Design, c1958 £70-£100

Mixed media

67cm x 31cm (textile)

77cm x 40cm (framed)



**Provenance:** The Old Cinema, London, 2022 (sale info. verso). Distinguished British artist, potter, and educator, Jameson is a long-standing member of the Royal Society of British Artists (RBA) and the Royal Institute of Oil Painters (ROI). Recognised for her contributions to art, including winning the Scharff Prize and being a finalist in the Hunting Group Awards. Works exhibited at The Royal Academy, London.

Note: Artist Resale Rights may apply

- 179.**Anthony Benjamin (British, 1931-2002) Geometric Abstraction (Blue / Red Ground, 9 Black Circles), c1962 Gouache  
Unsigned - Artist's Estate Sale  
15cm x 17cm (image)  
35cm x 35.5cm (framed) £70-£100



**Provenance:**

Nick Waters, Gallery 21: Acquired from the Artist's Estate Sale via Benjamin's partner Nancy Patterson of Norfolk, 2011. St Ives & "Kitchen Sink" School: In the mid-1950s, Benjamin settled in St Ives, Cornwall. Member of The Newlyn Society of Artists.

- 180.**Anthony Benjamin (British, 1931-2002) Geometric Abstraction (Green Ground, Diamonds 24 x 20), c1962 Gouache  
Unsigned - Artist's Estate Sale  
16cm x 26cm (image)  
34cm x 44cm (framed) £70-£100



**Provenance:**

Nick Waters, Gallery 21: Acquired from the Artist's Estate Sale via Benjamin's partner Nancy Patterson of Norfolk, 2011. St Ives & "Kitchen Sink" School: In the mid-1950s, Benjamin settled in St Ives, Cornwall. Member of The Newlyn Society of Artists.

- 181.**Anthony Benjamin (British, 1931-2002) Geometric Abstraction (Blue Ground, Yellow Squares, Red Circles), c1962 Gouache  
Unsigned - Artist's Estate Sale  
25.5cm x 23cm (image)  
42cm x 41.5cm (framed) £70-£100



**Provenance:**

Nick Waters, Gallery 21: Acquired from the Artist's Estate Sale via Benjamin's partner Nancy Patterson of Norfolk, 2011. St Ives & "Kitchen Sink" School: In the mid-1950s, Benjamin settled in St Ives, Cornwall. Member of The Newlyn Society of Artists.

- 182.**Anthony Benjamin (British, 1931-2002) Geometric Abstraction (Squares 5 x 5), c1962 Gouache  
Unsigned - Artist's Estate Sale  
16cm x 15cm (image)  
34cm x 33cm (framed) £70-£100



**Provenance:**

Nick Waters, Gallery 21: Acquired from the Artist's Estate Sale via Benjamin's partner Nancy Patterson of Norfolk, 2011. St Ives & "Kitchen Sink" School: In the mid-1950s,

Benjamin settled in St Ives, Cornwall. Member of The Newlyn Society of Artists.

- 183.** Ton Frenken (Dutch, 1930-2004) Wit / Groen / Rood Drieluik (White / Green / Red Triptych), 1983 £70-£100  
Oil on three hinged canvas panels  
Signed 'Ton Frenken', dated '1983' and inscribed in Dutch (verso)  
40cm x 82cm (opened out)



Ton Frenken was a prominent Dutch postwar and contemporary artist, art critic, and cultural administrator. Known for his versatile career, he contributed significantly to the Dutch art scene through both his creative work and his leadership in cultural institutions, including Noordbrabants Museum and Museum Boijmans Van Beuningen.

- 184.** Ned J. Osman (Outsider Art, U.S.A.) Construction, 1960 £200-£300  
† (Lyrical Abstraction)  
Oil on board  
Signed 'Osman' (lower right)  
51cm x 61cm (image)  
58.5cm x 68.5cm (gilt bronze box framed)



**Provenance:**

'Ned J. Osman, 423 So. 20th St., Phila. 46, Penna., PE - 5 - 9457' (label verso board)

Note: Artist Resale Rights may apply

- 185.** Peter Haigh (British, 1914-1994) £150-£250  
† Fishing boats in a harbour at dusk  
Watercolour and mixed media on paper  
Signed 'P.R.S. Haigh' (lower right)  
35cm x 47cm (image)  
50cm x 62.5cm (framed and glazed)



Haigh exhibited at prestigious venues including the Redfern Gallery, the Leicester Galleries, and the Royal Society of British Artists (RBA). Haigh was heavily influenced by Walter Sickert and Augustus John.

Note: Artist Resale Rights may apply

- 186.** Paolo Grimaldi (Italian, Contemporary, b.1959) Borgo Ominico, 1997 (Dreamscape) £70-£100  
Tempura, Oil on Board  
Signed 'P Grimaldi' (lower right)  
23.5cm x 17.5cm (image)  
52cm x 45.5 cm (gilt framed and glazed)



**Provenance:**

Artist's official studio stamp and signature (verso)

**187.**Islwyn Watkins (Welsh, 1938-2018)

£40-£60

Blue & Pink, 1986

Print

38.5cm x 47cm (image)

60cm x 68cm (white framed and glazed)



**Provenance:**

Exhibited Welsh Group Prints & Small Sculptures, 1986 (label verso). Islwyn Watkins was a Welsh artist, educator and slipware ceramics expert. Born in Tonypany, Rhondda, he studied at Cardiff College of Art from 1954 to 1959 and was influenced by the work of Kurt Schwitters. Watkins was a member of The Welsh Group from 1959.

**188.**Adrian Hemming (British, Contemporary, b.1945)

£150-£250

† Cells in Stream, 2000 (original work)

Canvas and mixed media (laid on board)

Signed with monogram 'AH' and dated '00' (lower left vertical) and signed in full and dedicated (horizontal verso)

66cm x 26cm (image)

84cm x 44cm (limed oak framed)



**Provenance:**

Cells in Stream was created for a specific series of photopolymer etchings created by the British landscape artist Adrian Hemming (b. 1945). The work from this period, particularly around 2000, is noted for its 'transmutation' of natural subjects into semi-hallucinatory, super-enhanced images through the use of photopolymer etching techniques. The series is notably held by Deutsche Bank and British Airways. The British Museum and V & A Museum retain Hemming's works of art in their permanent collections. Hemming is also a frequent contributor to the Royal Academy, London Summer Exhibitions.

Note: Artist Resale Rights may apply

**189.**Peter Ward (British, 1933-2032)

£150-£250

† Penwith Evening, 1989

Irregular shaped oil on canvas (laid on board)

Signed with monogram 'PW' and '89' (lower right)

38cm x 51cm (image)

52cm x 65cm (frame hand-painted by artist)



**Provenance:**

Studio 4, Penwith Gallery, St Ives Cornwall; The Laing Art Competition, Bristol 11/01/93 (labels and artist annotated verso).

Peter Ward was a prominent British post-war abstract sculptor and painter who became a permanent fixture in the St Ives, Cornwall art scene. Teaching: He moved to St Ives specifically to teach at the St Ives School of Art. Before this, he was on the staff at the West Surrey College of Art and Design. Legacy: He maintained a studio in the Penwith Gallery, where he had a major retrospective in 1997.

Note: Artist Resale Rights may apply

**190.** Maurice Cockrill, RA (British, 1935-2013) Looking East † #3, 2006 £100-£150

Japanese paper, ink and watercolour  
Signed with monogram 'MC 06' (2006), (lower right) and titled 'LE#3' (lower left)  
Royal Academy Museum UV-glazed and framed (label verso)  
66cm x 48cm (image)  
78cm x 55cm (framed)



**Provenance:**

Exhibited Royal Academy 2006; [with] Thomas Roddick & Medcalf Auctioneers 2010 (direct from the artist's studio); Exhibited Cheltenham Art Gallery & Museum; UK Private Collection.

Elected a Royal Academician (RA) in 1999, he later served as the Keeper of the Royal Academy Schools from 2004 to 2011. Cockrill's work is in many private and public collections, including the British Museum, Arts Council of Great Britain, Walker Art Gallery, Liverpool, and the Royal Academy of Arts. A retrospective of his work (1974-1994) was held at the Walker Art Gallery, Liverpool (1995) and a further retrospective was held at the Royal West of England Academy (1998).

Note: Artist Resale Rights may apply

**191.** Ng Foo Cheong (Malaysian, Contemporary, b.1965) Metamorphosis, 1999 £40-£60

Contemporary studio ceramic  
Signed 'Ng Foo Cheong' (lower left), dated '99' (lower right)  
25cm x 25cm (ceramic)  
52cm x 52cm (silver box framed and glazed)



**Provenance:**

Direct from the artist (label verso)

**192.** Pablo Picasso (Spanish, 1881–1973)

£30-£50

Pierrot Lunaire

Lithograph

Signed on the plate 'Picasso'

50cm x 32cm (image)

66.5cm x 50.5cm (gilt framed and glazed)



**Provenance:**

Arnold Schoenberg - Pierrot Lunaire (album cover).

Label: Vanguard – XVA 4067, Vanguard – XVA 4067

MONO Series: I Classici Della Musica Classica. Format:

Vinyl, LP, Album, Mono

Country: Italy.

Picasso also provided cover art for other Schoenberg recordings, such as a 1957 French VOX pressing (PL 10.460) of Verklärte Nacht and Chamber Symphony Op. 9, conducted by Jascha Horenstein.

**193.** Raymond Allen Jackson "JAK" (British, 1927-1997)

£70-£100

Original political cartoon for London Evening Standard Newspaper

"\_ \_ \_ Harmsworth, Thomson, Murdoch - watch where you're pointing that gun Maxwell!"

Signed 'JAK' (lower right)

59cm x 38cm (image)

78cm x 54cm (gilt framed and glazed)



'JAK' was the pen name of one of Britain's most prominent and controversial political and social cartoonists, Raymond Allen Jackson. He is best known for his long-running work with the London Evening Standard newspaper, where he served as the staff political cartoonist from 1966 until his death in 1997.

**194.** Professor Nicholas Wade, F.R.S.E. (Scottish, Contemporary)

£30-£50

Tokens of Sensation, 1994

A portrait of Hermann von Helmholtz (1821-1894) after an engraving in Königsberg, 1902, centenary limited edition print

Signed and numbered 1/10 (lower right)

Aluminium-framed and glazed

48cm x 36.5cm (image)

53cm x 43cm (framed)



Nicholas Wade, Emeritus Professor of Psychology at the University of Dundee in Scotland, is a distinguished academic known for his work on how we perceive the world. Hermann von Helmholtz (1821–1894) was a German physicist and physician renowned as one of the last true polymaths of the 19th century. His multidisciplinary work bridged physics, physiology, psychology, and philosophy, leaving a lasting impact on

how we understand energy, vision, and sound.

**195.**In the manner of Hugo Poll (Hungary, 1867-1931) £40-£60



Two Children in Landscape  
Pastel on paper  
Unsigned (front or back of paper)  
Gilt-framed and glazed  
34cm x 33cm (image)  
42.5cm x 49.5cm (framed)

Back board removed, no signature apparent.

**196.**Henri Ernest Rioux (French, 1877-1944) £100-£150



Société des Artistes Français Marseille, 1930  
Watercolour, pencil and charcoal on paper  
Signed 'H Rioux' and titled 'Marseille 1930' in pencil along with 'M.D' (Modèle Déposé), (lower left)  
In the 1930s, the 'M.D' in pencil alongside an artist's signature was often applied to works shown in commercial exhibitions or fine art galleries in France, signifying a registered copyright to the artist.  
Gilt-framed and glazed  
34cm x 27.5cm (image)  
49cm x 43cm (framed)

Rioux was highly active in the south of France, and his works were frequently shown in local exhibitions curated by the Musées de Marseille or private galleries in the city during the 1930s.

**197.**Vintage plaster cast head of a bear in the manner of a German Black Forest carving. £10-£20



**198.**Marion Jacobs (German, 1943-2002) £70-£100



Cubist Collage, 1997  
Gouache / mixed media on hand made deckled edge paper  
Signed and dated (label verso)  
Black framed and perspex glazed  
67cm x 51cm (image)  
83cm x 63cm (framed)

Marion Jacobs (1943–2002) was a German Postwar & Contemporary artist primarily known for her work in collages and mixed media.

**Provenance:**

Exhibited in Galerie Dreiseitel, Köln (label verso). Jacobs began working as an art dealer in 1968, she created her first collages in 1977 and held her debut exhibition in

1979 in Esslingen.

- 199.** Peter Ward (British, 1933-2032) £50-£80  
† Painting No.30 'Night Forms', 1989  
Irregular shaped oil on canvas (laid on board)  
Signed with monogram 'PW' (lower right)  
38cm x 67cm (image)  
52cm x 80.5cm (frame hand-painted by artist)



**Provenance:**

Studio 4, Penwith Gallery, St Ives Cornwall (annotated by the artist verso). Peter Ward was a prominent British post-war abstract sculptor and painter who became a permanent fixture in the St Ives, Cornwall art scene. Teaching: He moved to St Ives specifically to teach at the St Ives School of Art. Before this, he was on the staff at the West Surrey College of Art and Design. Legacy: He maintained a studio in the Penwith Gallery, where he had a major retrospective in 1997.

Note: Artist Resale Rights may apply



- 200.** A vintage early 20th-century white painted wrought iron rocking chair. With high backs and scrolled arms, in the classic French or Victorian garden furniture design. £80-£120

- 201.** Bernard Leach, CH, CBE, (British, 1887-1979) The Pagoda Motif Design for a St Ives Studio Pottery Plate Pen and ink on paper £50-£80  
Signed with monogram 'BL' (lower left)  
Gilt framed and glazed  
53.5cm x 43.5cm (framed)



The Pagoda Motif: Leach frequently used a stylised pagoda as a 'graphic' image, created with simple, rhythmic brush strokes or slip-trailed detailing. This design often appears on - tiles: Individual stoneware tiles featuring a single pagoda were a recurring part of his output; chargers and bowls: large 'Pagoda Bowls' (such as those from 1954) feature the motif in the well, often executed in iron glaze or white slip; standard ware: the design was occasionally applied to smaller functional pieces, such as standard ware bowls produced at the Leach Pottery in St Ives.

**Provenance:**

Christie's, South Kensington, London. The Japanese Aesthetic Sale 7316, November 7, 2012, Lot 107.

- 202.**A. Eugene 'Gene' Sanchez (Taos, New Mexico, 1932-2019) £70-£100  
 Expression in Red Taos  
 Modern mixed media  
 Signed 'a e sanchez' (lower right)  
 Gilt-framed and matted, glazed with Denglass  
 24cm x 33cm ((image)  
 41cm x 50cm (framed)



**Provenance:**

Gallery A, Taos, New Mexico (label verso). Founded in 1960, Gallery A was a major Taos institution located on Kit Carson Road associated with the Taos Moderns. Gene Sanchez transitioned from architecture to art later in life, beginning to exhibit his own works in Gallery A in the late 1990s until it closed in 2018.

- 203.**Antique lava charms from The Grand Tour, to include a key, pipe, fan and amphora on a split ring. £20-£30



- 204.**Hyman Segal, R.B.A. (b. London, 1914 - d. St Ives, Cornwall, 2004) £200-£300  
 The Carpet Seller, Montmartre (Paris, 1945)  
 Post War Impressionist  
 Oil on board  
 Signed 'Segal' (lower right)  
 Gilt-framed and glazed  
 35cm x 26cm (oil on board)  
 45cm x 34.5cm (framed)



**Provenance:** Exhibited R.B.A. Annual Exhibition, Autumn 1954, Entry No. 287 (labels verso). Segal was renowned for his portraits and character studies. 'The Carpet Seller' likely reflects his wartime interest in everyday working figures, a theme post-war he explored extensively while living in the St Ives art colony, working at 10 Porthmeor Studios, St Ives, Cornwall. During the 1950s, Bourlet was the primary agent for many RBA and Royal Academy artists, operating out of 17-18 Nassau Street and Mortimer Street in London. A "Bourlet label" from 1954 often includes a stock number prefix "H" and inventory number, which can be used to trace the painting's provenance in their historical archives (labels verso). Priced at £36.15.0 at the exhibition in 1954, see R.B.A. 1947/1962 catalogue facsimile (verso).



205. Flávio-Shiró (Japanese-Brazilian, b.1928)

£1000-£1500

† Study for Saga, Paris 1961

Visceral Abstraction - New School of Paris (Nouvelle École de Paris).

Oil on canvas

Signed 'Flávio-Shiró' (lower left)

57.5cm x 51cm (canvas)

59cm x 52.5cm (original artist's studio frame)

Inscribed, dated, and signed (verso): "a Willy Mucha Buitie de Flávio-Shiró Paris 21 / 6 / '61"

**Provenance:**

Gift from the artist to fellow painter and collaborator Willy Mucha (1905 – 1985), Paris, 21 June 1961.

Executed in June 1961, this work is a definitive example of the artist's contribution to the Nouvelle École de Paris (New School of Paris). The inscription captures a pivotal moment in Flávio-Shiró's career, dating precisely three months prior to the Deuxième Biennale de Paris (29th September-5th November 1961). At this landmark exhibition, Flávio-Shiró was awarded the International Painting Prize for his large-scale masterpiece, *Saga*. The present work bears a striking compositional affinity to *Saga*, serving as an essential historical link to the aesthetic developments that led to the artist's major international triumph. Annotated "a Willy Mucha Buitie de Flávio-Shiró Paris 21 / 6 / '61" ("To Willy Mucha, [a gift] of beauty from Flávio-Shiró, Paris 21 / 6 / '61") by the artist to his fellow artist collaborator and friend (verso). The 1961 Paris Biennale (officially the Deuxième Biennale de Paris) took place from 29th September to 5th November 1961. The date 21 June 1961 is significant because it captures the artist's output just three months before his major triumph at the Paris Biennial (September 1961), where he won the International Painting Prize for the large-scale canvas *Saga*, which has a very similar composition to this historically important New School of Paris (Nouvelle École de Paris) work of art.

During the 1950s and 60s, Flávio-Shiró and Willy Mucha were part of a group of artists known as the "New School of Paris" avant-garde who frequently met to discuss and develop their work. This group included other prominent Brazilian artists such as Antônio Bandeira, Arthur Luiz Piza, and Sérgio Camargo.5–1995) who were part of the same vibrant artistic circle in Paris during the mid-20th-century. Their relationship was primarily one of peers and frequent collaborators within the European art scene. Both artists were closely associated with the Abstract Expressionist movement in Paris. Their works often appeared in the same prestigious catalogues and museum collections, such as the São Paulo Museum of

Modern Art (MAM). They were both championed by influential art critics of the time, such as Denys Chevalier, who helped promote the 'New School of Paris' to which they both belonged. While they maintained distinct styles - Shiró being deeply influenced by his Amazonian background and Mucha by his Polish-French heritage - they were professional contemporaries whose careers were deeply intertwined with the internationalist spirit of post-war Paris.

Flávio-Shiró received numerous honours, including the International Painting Prize at the 1961 Paris Biennial and Japan's Order of the Rising Sun in 2019.

Flávio-Shiró's works are held in prestigious permanent collections, including São Paulo Museum of Modern Art (MAM); Hara Museum of Contemporary Art in Tokyo and Fonds National d'Art Contemporain in France.

Note: Artist Resale Rights apply



- 206.** WWI silver war badge or wound badge issued to servicemen honourably discharged during the war. The words 'For King and Empire, Services Rendered' to the rim. No. B188965 to the verso. £20-£30



- 207.** Two Chinese bronze models of foo dogs, along with another bronze model of a beast, a plaster figure and various other items. £100-£150



- 208.** Two 20th-century oriental carved hardwood figures, one of an immortal, the other a standing figure, with silver wire inlay. H35cm. £30-£50



- 209.** A Victorian novelty pin case modelled as a scallop shell, with blue velvet interior and pin rack, possibly for a chatelaine. Secure closure. £30-£50



**210.**A Japanese Meiji period bronze model of a striding elephant. Realistically modelled with the trunk in the air with a stamped character mark to the underside. H29.5cm x L28cm.

£100-£150



**211.**A 20th-century lacquered Kashmiri bowl, decorated on a gold ground with birds amongst flowers and plants, standing on a circular pedestal, the reverse with a label, 'B. Dar & Co P. O. Rainawari Srinagar Kashmir India'. Diameter 34cm.

£40-£60



**212.**A large Meissen cabinet plate featuring the iconic "B-For" design, with crossed swords to the verso. Beautifully decorated and gilded. Central hand-painted daffodils and forget-me-nots. Diameter 30cm.

£40-£60



**213.**Pair of Chinese brass vases with scrolled cloud dragons around the neck of the vases and engraved decoration to the body, H19cm. (2)

£60-£80



**214.**A Chinese blue and white dish decorated with boys, with a character mark to the base, 12.6cm diameter, along with a smaller blue and white bowl, 8.6cm diameter.

£40-£60



**215.**Vintage Conway Stewart fountain pen in the green hatch pattern with gold-filled trim, with a 14ct gold nib. In the original presentation box with the instruction sheet

£30-£50



**216.**A 20th-century Japanese marquetry tabletop elm cabinet with lacquered interior and abalone inlaid door panels, with brass mounts and handles; together with a small collection of costume jewellery.

£80-£120



**217.**A collection of rough fossils and gemstones, various ages, including quartz, bloodstone, hematite, and Blue John, etc.

£40-£60



**218.**Vintage scorched or "tiger" bamboo letter rack with slatted compartments, often utilised as a desk tidy or stationery holder. W30cm.

£10-£20



**219.**A vintage first aid kit, military marching compass, vintage travelling chess set, and Winston Churchill projector slides.

£40-£60



**220.**An 1825-1925 centenary bronze medal for the Stockton and Darlington Railway.

£40-£60



**221.**A Victorian-style reupholstered French rocking footstool, H39cm x W49cm x 35.5cm.

£20-£30



**222.**A collection of WWI medals awarded to 171813 SPR. M.Bowerman. Royal Engineers", 4693 PTE. A. Bowerman, Oxford and Buckinghamshire Light Infantry" and 70886 Pte J.W.D. Young, Devon Regiment.

£50-£80



**223.**A WWI Christmas tin, along with three WWI medals awarded to 118760 Pte .T. Carruthers. Royal Engineers, and a territorial army, awarded to 859119 BMBR.E. Webb. Royal Artillery.

£70-£100



**224.**A collection of gastronomic ephemera from the first half of the 20th-century. Menus from famous restaurants in London and France. Featuring an autograph of the famous 1930s Boris Karloff from the Frankenstein films. Also, the menus for the coronations of George VI and Queen Elizabeth II, amongst other wine lists and menus. £20-£30



**225.**A collection of eight military regiments' drum ice buckets, to include The Royal Regiment of Fusiliers, The Royal Tank Regiment, The Dorset Regiment, The Royal Artillery, The Rifle Brigade, The Royal Regiment of Wales, The Royal Engineers, and The Royal Army Ordnance Corps. (8). £50-£80



**226.**Two WWII German military decorations, the Narvik Shield and the Kuban Shield, contained in display in a frame. £30-£50



**227.**British Military "Brodie" helmet, with interior liner, and leather chin strap, the interior brim faintly stamped D/E65. £40-£60



**228.**A collection of American Philadelphia war bulletin WWII bubblegum cards. (88) £80-£120



**229.**A collection of military-related items, to include a Pingat Jasa Malaysia Medal, a compass, a military booklet, postcards, photographs and two brass button sticks. £40-£60



**230.**A WWI Queen Mary Christmas tin, along with an Imperial Service Medal awarded to Walter Hugh Swanborough, various military and naval buttons, commemorative medals, an oak leaf and two ribbon bars. £40-£60





**238.**Three albums of First Day Covers, special hand stamps, to include one album of GB stamps and six albums of Commonwealth stamps. £40-£60



**239.**Presentation packs for Guernsey, Australia, and First Day Covers, mostly in albums but including loose sheets. £30-£40



**240.**Stamp albums GB and Commonwealth including mint GB block sheets. £40-£60



**241.**Three boxes of First Day Covers stamp albums, including yearbooks and loose stamps. (3) £30-£40



**242.**First Day Covers in two boxes, including two albums of Benham Olympic covers and a small box of cover presentations. (2) £30-£40



**243.**A comprehensive collection of fourteen folders of Royal Mail presentation PHQ cards. Various subjects and ages. Mostly in original, unopened packages. £80-£120



**244.**Merrythought WWI commemorative centenary teddy bear, "Tommy", in uniform, with medal, belt and hat, maker's mark to right foot. Height 35cm. £70-£100



**245.**An Art Nouveau metal belt with fine, detailed open fretwork. Patent marks to the clasp. W68cm.

£50-£80



**246.**A collection of vintage Sindy items to include a wardrobe, a horse and a horse box, a dressing table and a stool, a magic cooker, and various other related items.

£100-£150



**247.**A collection of Scalextric to include a Digital World Champion set, along with James Bond 007 Skyfall set, and Mini Mayhem set. All boxed.

£50-£80



**248.**A Lawrence Emanuel Edwardian silver and enamel buckle. Birmingham 1908.

£30-£50



**249.**A mixed collection of play-worn toys, including Corgi examples, Britains, and various Solido models, all military-based examples.

£50-£80



**250.**A good collection of farmyard Britains and similar, to include animals, windmill, trees, wishing well, figures, and wheelbarrows, telephone box, water pump etc.

£70-£100



**251.**A silver-plated Russian salt pot with cloisonné enamel design, circa 1900. Maker's mark and inner glass liner.

£40-£60



**252.**A large collection of play-worn vintage Dinky toys, including 651, 689, 623, 626, 641 and various other examples.

£50-£80



**253.**A Victoria locomotive with various train carriages, along with various die-cast cars and models.

£50-£80



**254.**An Edwardian silver brooch featuring a stag with five point antlers and detailed decoration.

£20-£30



**255.**A Hornby Railways electric train set, along with various Meccano and various farm animal toys, and other similar items.

£50-£80

Untested for electrical safety. Sold as seen.



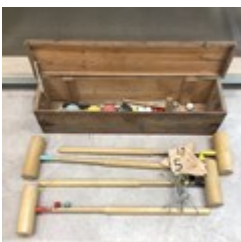
**256.**Two The Franklin Mint cars, including a Premier Edition Rolls-Royce Silver Ghost, along with a 1931 Bugatti Royale Coupe-de-Ville. L39cm.

£50-£80



**257.**A vintage Riley chrome radiator grille, featuring a blue enamel badge circa 1930. W34cm x H41cm.

£50-£80



**258.**A vintage Atlas croquet set in fitted wooden chest, appears complete.

£70-£100



- 259.**A large collection of 20th-century cast military toy soldiers, including WWII German examples, WWI British, French, and other Allied examples, as well as 19th-century-style British military figures. £30-£50



- 260.**Cricket memorabilia: A novelty desk top 1930s clock on a stand, featuring the ball, the wicket and the cricket bat with original paintwork, W18cm x D8.5cm. £60-£80



- 261.**A Bravo Delta Models hand-carved mahogany model of a Westland Sea King Mk5 helicopter. L56cm H14cm. £30-£50



- 262.**A collection of model military vehicles to include a tin plate K25 tank, a Willy's jeep, and a Dodge M42 command truck. Largest example L35cm x H20cm. £30-£50



- 263.**A Nepalese Tibetan tiger brass filigree tiger lion, set with carnelian and turquoise, the head with fine wire work decoration, L12.5cm. £60-£80



- 264.**Two Astra anti-aircraft guns, along with one large search light, two small examples, and a wheel-mounted example. Barrel length 26cm. (6). £40-£60

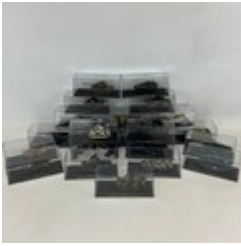
Untested for electrical safety. Sold as seen.



- 265.**A Large collection of Ultimate Tank display models, including Leopard 1 A5, Jagdpanzer IV, Leichter Zugkraftwagen 3T, Tiger 2, Schwerer Zugkraftwagen 18T, 8.8cm Flak 37 and various other examples, all contained in plastic cases. (48) £70-£100



- 266.** Baccarat ruby glass heart-shaped paperweight. Signed Baccarat, France. £40-£60



- 267.** A collection of Ultimate Tank display models to include Chieftain Mk5, M4A3 Sherman, Churchill Mk7, M109A6 Paladin, M1A1HA Abrams, and various others, all in plastic display cases. (22) £70-£100



- 268.** A collection of Ultimate Tank display models to include two Somua S35, T34/76, Leclerc T5, AMX 30 and various other examples, all in plastic display cases. (18). £50-£80



- 269.** An agate and crystal sterling silver necklace of graduating beads, L49cm. £20-£30



- 270.** A collection of Waterloo regiments' tin soldiers, mainly modelled on 19th-century examples, including the Prince of Wales' Own Dragoons, Cuirassier Regiment, Jager Gelernte-Jager Kompanie, Light Infantry Oxford Regiment, and many others, contained in a wooden display frame. £40-£60



- 271.** Britain's No. 41168 VE Day British Tank Set, including Sherman M4 Tank, 2 x British RTC Tank Crewmen, 3 x Civilian Figures. H14cm x L23cm. £30-£50



- 272.** 1950s-vintage wooden pull-along toy car with a family of four by Escor, a Dorset-based company that began producing wooden toys in the 1930s. Part of the maker's label is still present. L24cm. £10-£20



**273.**The Franklin Mint George Patton's M4A3 (76) Sherman Tank. H14cm x L30cm. £50-£80



**274.**A Unimax WWII-style model of a German Tiger Tank. L48cm. £100-£150



**275.**A collection of Graham Farish models of carriages, along with various railway tracks, super power unit, model buildings and other related items. £80-£120

Untested for electrical safety, sold as seen.



**276.**A Great Western Railway Company 150th anniversary plaque; along with a B.R.E.L. Swindon railway plaque. £30-£50



**277.**A 20th-century SHELL-MEX and BP LTD oil can, painted in red with original brass cap and carrying handle. H2cm. £40-£60



**278.**A miscellaneous collection of car-related badges, including AA, Ford, Blackmoor Vale, M.C.C., Brooklands, and various others. £70-£100



**279.**A 20th-century enamel sign for Duckham's Motor Oil with thermometer gauge. H106cm x W28cm. £120-£180



- 280.**A set of six official U.S. Open Pebble Beach golf balls by Callaway in original cardboard box including 2000, 2019 and 2010 and three others. £30-£50



- 281.**A collection of football/sporting Celtic and Scotland shirts, along with a Chris Sutton signed photograph. (16) £50-£80



- 282.**A collection of programmes, to include Lawrence of Arabia; World Premiere James Bond Goldfinger, with two tickets for the premiere; Cats; Les Misérables; A Hard Day's Night, and various other programmes; together with an invitation for Prince William and Katherine Middleton at the RAF club £40-£60



- 283.**A large collection of heavy rock/pop records, to include AC/DC, Iron Maiden, Public Enemy, Madonna, Chaka Khan, Run DMC, Phil Collins, UB40, W.A.S.P, Black Sabbath, Saxon, Thin Lizzy, Motorhead, Ozzy Osbourne, Meatloaf, Blondie, Megadeth, Motley Crue, Kiss, Alice Cooper, Deep Purple, ZZ Top; along with eight punk Sex Pistols singles, including God Save the Queen, Pretty Vacant, and others. £200-£300



- 284.**Tanglewood Baretta electric guitar with a rosewood and mother of pearl neck. £50-£80



- 285.**An Arietta IVM Hohner piano accordion in red with a fitted leather strap. £80-£120



- 286.**A vintage 3/4 cello with a stamp on the interior W. Thompson, with bow and carry bag. Cello length 45 inches. £100-£150



**287.**Gerhard Rudolf flute contained in a fitted case. Length 46cm. £30-£50



**288.**Joe Engle, American pilot, aeronautical engineer, and NASA astronaut, signed photograph, along with a printed Skylab display. £70-£100



**289.**A Garrard 401 record player, with turntable deck and original instruction manual. In a rosewood case with a perspex cover. £500-£800

Untested for electrical safety. Sold as seen.



**290.**A 1970s Garrard GA200 music centre, an all-in-one entertainment system featuring a belt-driven record player, a cassette deck, and an FM radio tuner, with a smoky perspex dust cover. £60-£80

Untested for electrical safety. Sold as seen.



**291.**Vintage Garrard Synchro-Lab 95B turntable. £80-£120

Untested for electrical safety. Sold as seen



**292.**Vintage Garrard GT55P turntable, belt-driven DC service motor. Together with a spare case. (2) £100-£200

Untested for electrical safety. Sold as seen.



**293.**Vintage Garrard Zero 100SB Synchronous belt drive turntable. £100-£200

Untested for electrical safety. Sold as seen.



**294.**A Garrard Stereosound 1010 turntable, Garrard Music Recovery Module and two speakers. £200-£300

Untested for electrical safety. Sold as seen.



**295.**A Garrard DD-75 Direct Drive Turntable unit. £80-£120

Untested for electricity safety. Sold as seen.



**296.**A collection of vintage CB Radios and other vintage electronics. £50-£80

Untested for electrical safety. Sold as seen.



**297.**A collection of vintage radios to include Bang & Olufsen, BeoLit600, Robert RSR-100 Boombox, Sanyo, CX 75 Recorder, and an unused Sony WA-6000 radio cassette recorder. £100-£150

Untested for electrical safety. Sold as seen.



**298.**A collection of pens and propelling pencils to include A Waterman C/F gold-plated fountain pen, vertically lined with an 18k gold nib: a silver ballpoint pen and a pencil set in a Walker & Hall case. The pen marked 'Sterling Silver', and the pencil marked Birmingham 1967, maker WM Ltd., 38 grams. A Yard O Led rolled gold propelling pencil in its original box, together with a Conway Stewart No.26 blue and gold propelling pencil and two celluloid 1930s advertising propelling pencils. A Mabie Todd & Co. No. 5 rolled gold dip pen, the barrel with chased foliate detail stamped Mabie Todd & Co., the nib stamped No. 5. £80-£120



**299.**An assortment of fountain pens and pens, some with gold nibs. To include: a Cross Apogee Black Star lacquer fountain pen with an 18k white gold rhodium-plated nib and matching rollerball pen, boxed. A Lalex 1938 fountain pen with a 925 sterling silver cap and black lacquer barrel, boxed. A Sheaffer Balance blue marble white dot rollerball pen and a Cross Townsend Medalist chrome and gilt rollerball pen. A Parker '61 Classic turquoise fountain pen, ballpoint and propelling pencil set, all with lustraloy caps in the original box. Chalk £120-£180

marks visible.



- 300.**A collection of four fountain and rollerball pens, three in original boxes, to include A Conklin Mark Twain Crescent fountain pen with a blue marbled body with a sterling silver trim and a 14k gold nib; a Sheaffer Valour brown marbled fountain pen with gilt and a 14k gold nib in a laminated Sheaffer box; a Waterman Preface green fountain pen with an 18k Gold nib, boxed; and a Cartier Diablo rollerball pen in brushed steel and a platinum-coated trim with a blue cabochon stone on the cap. No. 174177. £150-£250



- 301.**A Dupont, Paris "French Line" ballpoint pen, in the original box. £80-£120



- 302.**An assortment of five cased pens, to include a Cross 'Classic Black', Fisher 'Space Pen', Sailor, Parker Custom Insignia Pen and a Platignum Elite XK500. (5) £30-£50



- 303.**Riley, Harold - Sketches from the Belfry, a limited edition (of 200 numbered and signed copies, 25/200). £150-£250



- 304.**A collection of six early published 007 books to include Thunderball, first edition, first impression; first edition, third impression, Man with the Golden Gun; On Her Majesty's Secret Service, first edition, second impression; Live and Let Die, first edition by the Reprint Society; The Thriller Book Club Edition, 1957, Diamonds Are Forever; and a Book Club edition of Man with the Golden Gun. £150-£250



- 305.**Golfing interest - The Golf Course of the British Isles, described by Bernard Daruim, painted by Harry Rowntree, along with three copies of Wentworth, A Host of Happy Memories. £50-£80



- 306.** Paul Brown signed limited edition 2001-2019, 45/100; including The Essential Henry Longhurst first edition, Virginia Woolf Books and Portraits, Jonathan Strange & Mr Norrell by Susanna Clarke first edition 2004 and The Spirit of St. Louis Lindbergh Scribners in original dust case. (7) £40-£60



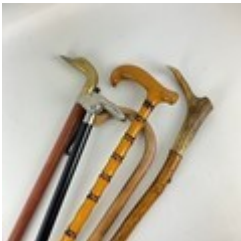
- 307.** Bird Song, Sebastian FAULKS, First Edition. 1993 uncorrected proof copy. Limited Edition proof from Hutchinson. £50-£80



- 308.** Bentley The Story by Andrew Frankel second edition 2005 in original presentation box. £20-£30



- 309.** Wales/Welsh interest - T H Parry-Williams single volume entitled 'Detholiad o Gerddi', hardback, with original cover; together with 'Deg Soned', 1987. £30-£50



- 310.** A collection of five walking sticks, one with a shot glass compartment, another with a hare's head finial, one with an antler horn and two others. £50-£80



- 311.** A vintage mid century teak bedside cabinet with single sliding interior drawer and hinged lid with contents. H48cm x W52cm x D37.5cm. £30-£50



- 312.** A large American beige linen and lace work tablecloth, W182cm x L365cm; together with twelve match servettes. £80-£120



**313.**A James Weir Victorian chainstitch hand-cranked sewing machine, circa 1872, with gilt and flower-painted decoration, the bed stamped Ja's G Weir, 2 Carlisle Street, Soho Sq, London, in a fitted case with an entire drawer with original instructions. H25cm. £50-£80



**314.**An 18th-century sampler, circa 1787, by Sarah Tatershall, aged 10, with a central inscription from the Bible within a floral needlework border, W27cm x H33cm. £40-£60



**315.**Bells Very Rare Scotch Whisky Royal Reserve 21 Year Old whisky in original box. H27cm. £30-£50



**316.**A limited edition 83/350, The Balvenie three-bottle whisky tantalus, comprising two bottles of 10-year-old Founders Reserve Malt Scotch Whisky, both of 70cl e 40% vol.; and a single bottle of 15-year-old Single Malt Scotch Whisky, each bottle forms a limited edition of hand-numbered bottles - maximum of 350 bottles from any one cask. In cask date 17/01/78 bottling date 21/12/93. Cask number 207. Bottle number 83. The bottle signed by David Stewart. 70cl 50.4% vol. £200-£300



**317.**Two bottles of Graham's Port 2007 and 2001, along with a bottle of Taylor's wine, and a De Bortoli Old Boys 21 Year Aged liqueur wine. £70-£100



**318.**A collection of miscellaneous gins including Tankerins, Cottons Garden gin, Whitneill gin and various others. £30-£50



**319.**A vintage Visgage viscosity gauge, along with associated charts and similar items. £50-£80



**320.**An assortment of late 19th- early 20th-century theodolite tripod stands, various styles, to include a vintage surveyor's staff. £50-£80



**321.**A collection of seven J. Rabone & Sons, Birmingham spirit levels and two others. £50-£80



**322.**A Georgian eight-day longcase clock, the hood with reeded columns, brass cups and shaped cornice, the brass dial with engraved decoration, with Arabic numerals. Weights and pendulum present. Viewing door H85cm. H219cm. £100-£150



**323.**A 19th-century eight-day oak and mahogany inlaid longcase clock, the hood with open swan neck pediment, supported by two turned ropetwist columns with brass cups, the painted dial with nautical scenes, lighthouse and castles, and boats under sail, with white dial and Roman numerals with subsidiary seconds dial and date aperture, the brass hands in the form of a crown and sword, and inscribed to the dial Fran Evans (Dutch?). The movement with striking bell, pendulum and weights present. The inlaid viewing door H57cm flanked by two ropetwist columns. H235cm. £100-£150



**324.**Zephaniah Bullock Box Wiltshire 19th-century 30-hour longcase clock. With a square brass dial decorated with corner spandrels, the face has an outer five-minute ring with Roman numerals and a date aperture. H200cm. £50-£80



**325.**Jean Roulet dest timepiece, Le Locle, the gimbal dial with date, day and month calendar, and moonphase within a gilt brass frame with an adjustable scale inscribed with time zones, the outer ring engraved with Zodiac symbols, H19cm. £150-£250



**326.**Two vintage Anglepoise lamps, one in blue and the other in cream. £40-£60

Untested for electrical safety. Sold as seen.



**327.**A Herbert Terry & Sons triple step anglepoise lamp in gold, along with a black example. £80-£120

Untested for electrical safety. Sold as seen.



**328.**A vintage art deco style lamp in the form of a reclining mermaid on a rectangular base with original white glass shade. H41cm (including shade) x L29cm. £40-£60

Untested for electrical safety. Sold as seen.



**329.**An Ormolu twin branch candelabrum, circa 1870. Depicting a cherub holding a cornucopia, with branches in the form of acanthus leaves, leaf drip trays, and floral cups mounted on a Rococo-style base. H33cm £100-£150



**330.**Pair of late 19th-century oil lamps H26cm, with wicks, and a pair of wall oil lamps with shade and brackets. (4) £30-£50



**331.**Four assorted brass oil lamps, three with funnels and shades, various ages. Tallest H44cm. £30-£50



**332.**A 19th-century gilt-framed mirror. with shell and foliate decoration, with original glass, W36.5cm x H45cm. £40-£60



- 333.**An Ercol dark oak dome-topped Welsh dresser with open shelves above two drawers and a cupboard, with panelled doors. H170cm x W91cm x D40cm. £40-£60



- 334.**A contemporary pine-panelled blanket box, each panel with floral needlework decoration, with a rising lid. H48cm x W78cm x D51.5cm. £40-£60



- 335.**A contemporary Bur Walnut coffee table of rectangular form, the top raised on a pedestal base with detailed top and H34.5cm x W125cm x D70cm. £80-£120



- 336.**G-Plan style teak D-end drawer leaf dining table with six upholstered chairs with drop-in seats (4+2). With maker's label H Ponsford Ltd, London. £100-£150



- 337.**A large G-Plan display unit, comprising two glazed cupboards with internal glass shelves flanked by open shelves and a pigeon hole above two double cupboards. H198.5cm x W163cm x D46cm. Together with a set of open shelves above a three-drawer cupboard base. H198.5cm x W81cm x D46cm. Flanked by a further unit with a glazed cupboard above open shelves and a single cupboard base. H198.5cm x W42cm x D28cm. £200-£300



- 338.**An oak old charm monks bench/seat with carved back and front panels and hinged seat. H83cm x W95.5cm x D50cm. £70-£100



- 339.**A 19th-century oak country sideboard with gadroon border of two drawers with hawk carved handles and carved acanthus above two-door cupboard base with panelled doors, each decorated with game, one panel with fish and the other with a hare, both flanked by barley twist columns, raised on bun supports. (Upper section is available for restoration - see final photo). £80-£120

H97cm x W133cm x D63cm



**340.**A 19th-century mahogany fall front bureau, the fall enclosing a central cupboard flanked by two long drawers, two pigeon holes and four smaller drawers above three long graduating drawers, raised on bracket supports and shaped skirt. H112cm x W102cm x D51cm.

£20-£30



**341.**An Edwardian mahogany display cabinet/bookcase with two glazed doors enclosing three open shelves, H109.5cm x W91cm x D30cm; together with a Victorian-style mahogany glazed bookcase with an angled pediment top above two glazed doors enclosing two open shelves. H94cm x W81cm x D21cm.

£30-£50



**342.**A large contemporary oak plank top refectory table. Raised on turned heavy turned baluster supports to block feet united by end stretchers and a central foot bar. H76cm x W259cm x D 81cm.

£300-£500



**343.**A 20th-century ornate brass peacock fan fire screen, with a central griffon motif and a griffon to both sides, with pierced decoration and swing handles to the mouth. H63cm.

£50-£80



**344.**19th-century mahogany chest of 2 short over 3 long graduating drawers with Heppelwhite-style oval plate drop handles, locks, Hallmarked RL&Co. Raised on short bracket supports and shaped skirt. H126cm x W91cm x D53cm.

£60-£80



**345.**Mid Century oak chest of two short over three long graduated drawers. With brass swan drop handles raised on a plinth base. H91cm x W106cm x D46.5cm

£50-£80



**346.**A contemporary teak secretary desk, the fall enclosing a single shelf with three central drawers, each with brass turned handles flanked by two pigeon holes, above three long drawers raised on squat bracket supports. H134cm x W83cm D43.5cm.

£40-£60



- 347.**A 19th-century walnut circular centre table with gadroon border raised on a carved column to a scrolled tripod base decorated with acanthus terminating in porcelain casters. H73cm x diameter 118cm £200-£300



- 348.**A Georgian tea caddy, with cornucopia or shell-inlaid decoration on the lid and front, the interior with led lining, a partitioned centre with two lids, decorated with graduated circle lids. H14cm X W23cm X D12cm. £40-£60



- 349.**A Walker and Hall mahogany inlaid canteen twin-handled chest with shell motif to the lid, and satin wood and boxwood inlaid edge, converted to a two-drawer Wellington-style display cabinet. H24cm x W48.5cm x D32.5cm. £50-£80



- 350.**An Ercol drop elm and beech table model 308 folding occasional table, 62cm, h 40cm, 62cm diameter. £80-£120



- 351.**A pair of 20th-century gilded and painted faux marble pedestals, each in the form of a leopard mask and leg. Each with a studded motif collar, standing on a painted stepped base. H90cm. £150-£250



- 352.**A 20th-century mahogany centrepiece standing on a weighted turned base. H13cm x Diameter 31.5cm. £50-£80



- 353.**A traditional Korean soban table with lacquered finished wood, the 12-sided top raised on four curved tiger-leg supports, the feet united by two stretchers. H27.5cm x Diameter 37.5cm. £200-£300



**354.**A vintage mid-century mahogany cocktail/drinks trolley of oval form, two hinged lids to reveal a drinks section with various fitted sections standing on wheels. H76cm x L115cm x W41cm. £50-£80



**355.**A pair of 20th-century brass and marble pedestal wine/plant stands, with circular marble tops, diameter 40.5cm, raised on a brass turned column, decorated with scrolled and acanthus supports mounted on a tripod base, the supports terminating in lion paw feet. H94cm. £300-£500



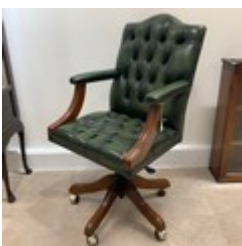
**356.**A contemporary green floral upholstered two-person sofa, with arched headrest and scrolled out swept arms, raised on turned front supports, W134cm. £80-£120



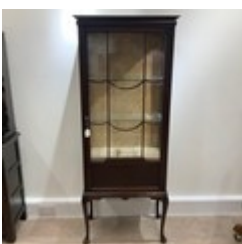
**357.**A contemporary green floral upholstered two-person sofa, with arched headrest and scrolled out swept arms, raised on turned front supports, W134cm. £80-£120



**358.**An Ercol dark oak refectory table with lyra-style end supports untied by a T-bar, with six wheelback dining chairs (4+2). H76cm x W180cm x D81cm. £80-£120



**359.**A contemporary green leatherette captains' swivel office chair raised on a quatrefoil base terminating in casters. £80-£120



**360.**A 19th-century mahogany glazed floor standing display cabinet raised on cabriole supports. H167cm x W67cm x D38cm. £50-£80



**361.**An oak Jaycee-style chest-on-chest, each section with three drawers, with detailed cornice, the top drawer with engraved decoration, the lower section with brush slide, raised on Queen Anne style bun supports, H160cm x W63cm x D54cm.

£80-£120



**362.**Large Victorian flame mahogany chest of two short over three long graduating drawers with turned handles, raised on squat bun supports, H126.5cm x W109cm x D54cm.

£100-£150



**363.**Contemporary mahogany chest of two short over three long graduating drawers with intricate brass drop handles raised on bun supports. H99cm x W97cm x D34.5cm.

£50-£80



**364.**Contemporary mahogany chest of two small central drawers flanked by two box drawers above two long drawers with swan neck drop handles, raised on ogee bracket supports. H87cm x W81cm x D47.5CM. Together with a pair of matching single-drawer bedside tables, H64.5cm x W49cm x D39cm. (3)

£80-£120



**365.**A vintage G-Plan teak circular coffee table designed by V. B. Wilkins in the 1960s, featuring a smoked glass insert. H45.5cm x Diameter 96cm.

£40-£60



**366.**A mid-century teak and glass 'trinity' coffee table with three nesting tables, manufactured by Nathan Furniture in the 1960s (label present). Table H51cm x Diameter 82cm. Smaller tables H44cm x W62.5cm x D33cm.

£50-£80



**367.**A 1930s oak desk top stationery box, with hinged open-out doors, letter and inkwell and pen compartments and day date calendar.

£40-£60



**368.**An oak three-section barrister's Globe Wernicke style stacking bookcase, with rising/sliding glazed fronts, raised on a plinth section base. H125cm x W86cm X D30cm.

£100-£150



**369.**A 19th-century burr walnut veneer marquetry inlaid Pier cabinet, with brass ormolu mounts and a single-glazed door to internal shelves, H105cm x W75cm x D32cm.

£80-£120



**370.**A pair of Danish Valentinsen Mobelfabrik teak circular coffee tables, raised on quatrefoil base. H51cm x Diameter 71cm. With original purchase receipt.

£100-£150



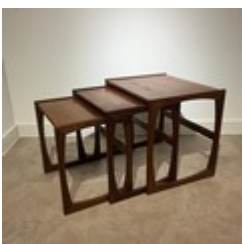
**371.**An Ercol Windsor 203 blond beech, elbow chair with padded back and seat.

£40-£60



**372.**G-Plan oval dining table H75cm x W145cm x D89cm and six upholstered splat back dining chairs with overstuffed seats.

£40-£60



**373.**Nest of three G-Plan tables from the Quadrille range, H49cm x W53cm x D43cm.

£40-£60



**374.**A 4-piece metal conservatory suite comprising upholstered stool, elbow chair, and chaise lounge with undertier and a glazed shelf at the foot end, together with a glazed lamp table with undertier. H91cm x W33.5cm. Chaise lounge L109cm (4)

£80-£1209

ARR is calculated in GBP. Exchange rates are updated daily.  
ARR is cumulative and applies to lots with a hammer over £1000

£0 - £50,000 - 4%  
£50,000 - £200,000 - 3%  
£200,000 - £350,000 - 1%  
£350,000 - £500,000 - 0.5%  
£500,000+ - 0.25%

ARR is capped at £12,500

† ARR will be subject to additional fees. See last page for more details.